

8-1-2007

NJIT Highlanders Women's Volleyball 2007 Media Guide

New Jersey Institute of Technology Athletic Department

Follow this and additional works at: <https://digitalcommons.njit.edu/volleyballw-mg>

Recommended Citation

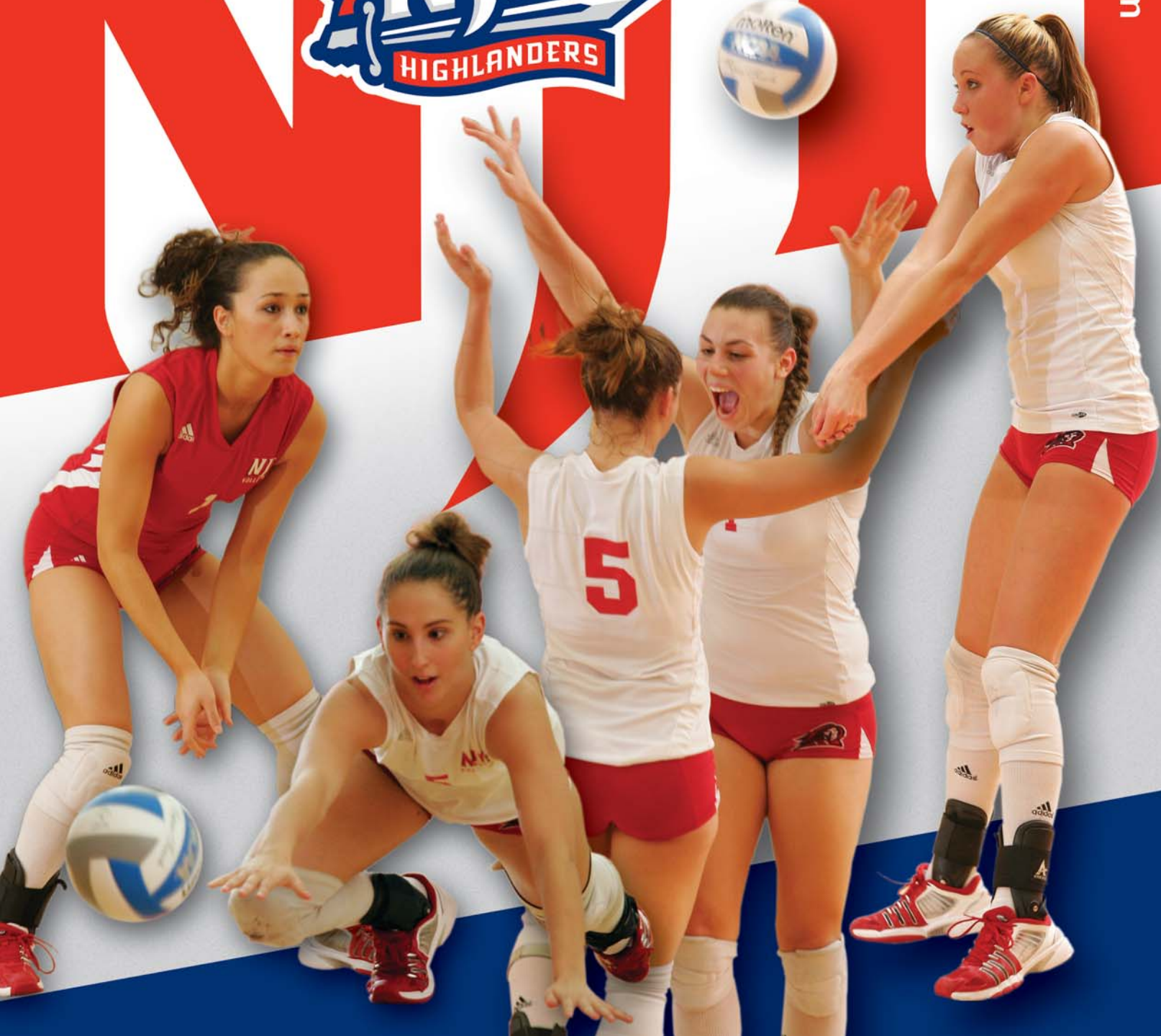
New Jersey Institute of Technology Athletic Department, "NJIT Highlanders Women's Volleyball 2007 Media Guide" (2007). *Volleyball - Women's*. 1.
<https://digitalcommons.njit.edu/volleyballw-mg/1>

This Book is brought to you for free and open access by the Athletic Department at Digital Commons @ NJIT. It has been accepted for inclusion in Volleyball - Women's by an authorized administrator of Digital Commons @ NJIT. For more information, please contact digitalcommons@njit.edu.

Women's Volleyball
2007



njithighlanders.com





| | |
|---------------------------------------|-------|
| About NJIT | 2-3 |
| University Administration | 4 |
| NJIT in Division I | 5 |
| Coaching Staff | 6 |
| Outlook | 7 |
| Roster | 8 |
| 2007 Player Profiles | 8-11 |
| 2006 Statistics and Results | 12 |
| Athletics Facilities | 13 |
| 2007 Opponents Information | 14-17 |
| About Newark..... | 18 |
| Happenings In and Around Newark | 19 |
| All-Time Honors/Program History | 20 |
| All-Time Roster | 21 |
| Directions/Accommodations | 22 |
| Athletics/PE Staff | 23 |
| NJIT Alumni Hall of Fame | 24 |

Front cover (l-r): Kubra Tanrikulu; Danielle Thompson; Thompson (#5 back to camera) and Kristy Haeckel; and Agnieszka Pregowska in action (Larry Levanti photos).

Back cover: the Highlanders huddle between games (Levanti photo); 2007 schedule. **Inside front cover:** Estelle and Zoom Fleisher Athletic Center (courtesy of University Communications).

Inside back cover: the 2007 Highlanders team picture (Levanti photo).

MEDIA INFORMATION

This guide is designed to assist in coverage of NJIT volleyball. For home matches, the NJIT sports information office will provide an official box score 10 minutes following each game. Coach Ryan McNeil and requested players will be available for interviews on the court following a 10-minute cooling-off period. Radio broadcast requests should be made at least 10 business days prior to the contest.

Requests for coach and player interviews on non-game days should be made through the NJIT sports information office (973-596-8461).

CREDITS

The 2007 NJIT Women's Volleyball Guide is a production of the NJIT Sports Information Office in cooperation with the Office of University Communications. Written, compiled and edited by Tim Camp and Stephanie Pillari. Cover and interior design by Samantha Horning Graphic Design. NJIT photographs and

information courtesy of University Communications. All team and action photography by Larry Levanti. Printing by Prestige Graphics, Union, NJ.

WHY THE HIGHLANDERS?



The home of NJIT, University Heights, was formerly known as the Newark Highlands and NJIT's mailing address used to be High Street, until the thoroughfare was renamed in memory of Dr. Martin Luther King, Jr.

In 2006-07, NJIT athletics, in keeping with its move to NCAA Division I, unveiled a new graphic identity, which includes a new Highlanders logo (shown). Developed by CN Foundry for NJIT, the logo depicts the traditional Highlander, whose ferocity and bravery against all odds are the stuff of legend.



QUICK FACTS

NEW JERSEY INSTITUTE OF TECHNOLOGY (NJIT)

Location: University Heights, Newark, NJ

Founded: 1881

Enrollment: 5,263 (*undergraduate*)

NJIT website: www.njit.edu

Nickname/colors: Highlanders/red and white (*blue accent*)

Home court: Estelle and Zoom Fleisher Athletic Center

Affiliations: NCAA Division I (*reclassifying*), ECAC

Conference: Independent

University President:

Dr. Robert A. Altenkirch

Director of Athletics: Lenny Kaplan

Athletic Department phone:

973-596-3636

Sports Information

NJIT athletics website:

www.njithighlanders.com

Results hotline: 973-596-5555

Assistant AD for Sports Information:

Tim Camp (973-596-8461;

timothy.camp@njit.edu)

Assistant SID: Stephanie Pillari

(973-596-8324; pillari@adm.njit.edu)

Women's Volleyball

Head coach (alma mater, year):

Ryan McNeil (*Lewis, 2001*)

Contact info: 973-596-6498;

mcneil@adm.njit.edu

Career record (years): 19-41 (2, at NJIT)

Assistant coaches: Jose Reynaldo (JR) Martins

2006 record: 10-21

Returning/lost (starters):

9 (6+libero)/1 (0)

NJIT is New Jersey's Science & Technology University. With roots going back to 1881, when it was founded as Newark Technical School, New Jersey Institute of Technology observed its 125th anniversary in 2006.

Located in University Heights, Newark, NJ, home to more than 30,000 college students, NJIT's campus is just 10 miles from New York City.

Playing a critical role in shaping New Jersey's future, NJIT, as a major public technological university, is an important pipeline for the flow of technology into society. The university's educational programs prepare students to be leaders in the technology-dependent economy of the 21st century. University researchers seek new knowledge to improve processes and products for industry. Through public and private partnerships and economic development efforts, the university helps to grow new business ventures that fuel the economy.

In recent years, NJIT has put more than \$83 million toward new and improved buildings and facilities on the 45-acre campus, including biomedical engineering labs and a campus center.

INSTRUCTIONAL PROGRAMS

NJIT offers 92 degree programs — 33 undergraduate, 40 master's and 19 doctoral programs — through six schools:

Newark College of Engineering
New Jersey School of Architecture
College of Science and Liberal Arts
School of Management
Albert Dorman Honors College
College of Computing Sciences

NJIT has 416 full-time faculty; more than 98 percent of whom hold the highest degree in their field. The student-faculty ratio is 13:1, with more than 5,200 undergraduate students and nearly 2,800 graduate students. Our students hail from 33 states and more than 100 countries to rank eighth in the nation for diversity.

Albert Dorman Honors College enrolls more than 500 students who take advantage of honors courses, research opportunities, advising and mentoring. Honors College students have SAT scores ranking in the top 10 percent nationally.

RESEARCH

NJIT drew more than \$75 million in research funding in 2005 and faculty members welcome student collaboration on research projects.

ECONOMIC DEVELOPMENT

NJIT is committed to economic development for Newark and the region. The university operates several outreach centers that provide direct technical assistance to the state's businesses with the goal of helping small and medium-sized companies. NJIT is also the home of New Jersey's oldest and largest incubator facility, and was one of the first institutions in the nation to adopt economic development as a fourth mission element, together with instruction, research and community service. More than 60 technology start-up companies, many of which hire NJIT students, are on campus.

THE CAREER EDGE

All 10 of the majors with the highest starting salaries for 2005-06 grads are in engineering, computing and business, according to the National Association of Colleges and Employers.

Computer and data processing services lead the list of the 10 fastest-growing occupations in projections compiled by the US Department of Labor. Computer-related employment is expected to grow 117 percent by 2008, according to the Career Guide to Industries.





As technology changes all fields, those with science and technology backgrounds are positioned to lead. Among the CEOs of the S&P 500 companies, engineering is the single largest undergraduate degree and more than half of CEOs have undergraduate degrees in engineering, business management, science, math and computing.

THE GLOBAL EDGE

The diversity in NJIT's student body and faculty prepares graduates to understand and succeed in the global marketplace. NJIT was named among the world's top 500 universities in a study by the Institute of Higher Education, Shanghai Jiao Tong University.

THE TECHNOLOGY EDGE

NJIT has been designated one of the nation's most technologically sophisticated universities by Forbes.com and a Princeton Review survey and the university has received major funding from the National Science Foundation and the National Security Agency in recent years.

THE ACADEMIC EDGE

NJIT has long been a national leader in applying new technologies and approaches to the educational experience. NJIT was a pioneer in requiring computer science for students in all majors and the School of Architecture has led innovations in teaching CAD and digital design. The school's innovative "paperless" first-year program was recently cited by Campus Technology Magazine.

Students have a wide range of educational choices in building an interest-tailored program. Among their options are cross-enrolling at neighboring Rutgers to enrich their program with subjects such as music and languages.

NJIT students learn emerging technologies from the researchers behind the technologies, developing valuable marketplace skills. Real-world experience through experiential learning makes graduates more marketable, with many co-op opportunities leading to permanent jobs.

THE REGIONAL EDGE

New Jersey, with America's highest concentration of pharmaceutical, hi-tech, biotech, and medical device companies is the place to study technology. It has the nation's highest per capita number of engineers and scientists as residents, while also leading in per capita rate of patents issued. Further, the Newark-New York region is a living laboratory for architecture and building sciences, environmental engineering and transportation.

THE RESEARCH EDGE

NJIT has been designated by the State of New Jersey as the Homeland Security Technology Systems Center and NJIT operates the world-renowned Big Bear Solar Observatory.

A HISTORY OF NJIT

From the Industrial Revolution to the Information Age, New Jersey Institute of Technology has a rich history with its beginnings developing from the industrial age.

In 1881, an act of the New Jersey State Legislature, recognizing an urgent need, sought a home for what would be the state's technical school. The efforts of Newark's public and private sectors resulted with the opening of Newark Technical School, addressing the state's need.

Over time, the university expanded its curriculum and mission. In 1919, the university established baccalaureate programs in three engineering fields. By the middle of the 20th century, Newark Technical School was transformed into the robust Newark College of Engineering.

The post-war period was one of enormous activity with regular expansion of the campus, as well as the introduction of doctoral level programs. In 1975, with the addition of the New Jersey School of Architecture, the institution had evolved into a technological university, emphasizing a broad range of degrees and dedication to significant research and public service. Newark College of Engineering, stronger than ever, remained intact, but a new university name — New Jersey Institute of Technology — reflected the institution's expanded mission.

A broadened mission called for the creation of a residential campus and the opening of NJIT's first dormitory in 1980 began a period of steady growth that continues. Two new schools were established during the 1980s—the College of Science and Liberal Arts (1982) and the School of Industrial Management (1988). The Albert Dorman Honors College was established in 1994, and the newest school, the College of Computing Sciences, was created in 2001.



DR. ROBERT A. ALTENKIRCH*President*

Dr. Robert A. Altenkirch, formerly vice president for research at Mississippi State University (MSU), joined NJIT as the university's seventh president in July 2002. During his tenure as MSU vice president for research, science and engineering, expenditures as reported to National Science Foundation (NSF) increased dramatically—75% from 1997 to 2001.

Prior to his appointment as vice president at MSU, Altenkirch served as professor of mechanical and materials engineering and dean of the College of Engineering and Architecture at Washington State University. From 1988 to 1995, he was professor of mechanical engineering and dean of the College of Engineering at MSU. He also served as professor and chair of mechanical engineering at the University of Kentucky.

In addition to the research program, his responsibilities encompassed congressional relations, intellectual property management and economic development. While dean of engineering at MSU, he led the effort to secure National Science Foundation funding for the establishment of the MSU NSF Engineering Research Center for Computational Field Simulation in 1990. Additionally, the Center was instrumental in helping the State of Mississippi attract a \$1 billion Nissan manufacturing plant.

Altenkirch holds a PhD from Purdue University, an MS from the University of California, Berkeley, and a BSME from Purdue, all in mechanical engineering. He is the author of over 50 publications and nearly 100 presentations in combustion and heat transfer and served as principal investigator for ten Space Shuttle experiments investigating the spread of fire in reduced gravity. He is a Fellow of the American Society of Mechanical Engineers.

DR. JOEL BLOOM*Vice President of
Academic and Student Services*

Dr. Joel Bloom has worked at NJIT since July 1990. In his current position, he is responsible for nine divisions of the university, including Physical Education and Athletics.

Dr. Bloom is also Dean of the Albert Dorman Honors College, which enrolls more than 525 students who are typically in the top 10 percent of their high school graduating class.

Prior to NJIT, Dr. Bloom spent seven years as assistant Commissioner in the New Jersey Department of Education. He is currently the Chair of the NASULGC Council of Chief Student Affairs Officers and the Newark Consortium Board for Pre-College Education.

Dr. Bloom earned his Bachelor's and Master's Degrees from Hunter College, and holds a Master's and Doctorate from Columbia University Teachers College.

**LENNY KAPLAN***Director of Athletics*

Since taking over as head of NJIT's division of physical education and athletics in August 2000, Lenny Kaplan was instrumental in establishing a sound NCAA Division II program, setting the stage for the reclassification into NCAA Division I.

Kaplan helped solidify and expand an NJIT program that was entering its fourth year in Division II when he arrived in Newark and in late 2002, after discussions with university President Dr. Robert A. Altenkirch and Vice President Dr. Joel Bloom, Kaplan began the task of steering NJIT's programs into Division I, a process that is set to reach fruition with full championship eligibility in 2009-10.

Along the way, NJIT has enhanced the athletics program, particularly in areas that will benefit the student-athletes directly.

The sports offerings have expanded to 19 varsity sports, and since 2004, NJIT has renovated its two main on-campus venues—Lubetkin Field and the Estelle and Zoom Fleisher Athletic Center. The school also signed a 10-year partnership to play its home baseball in the Bears and Eagles Riverfront Stadium and agreed to host basketball in the new home of the NHL's New Jersey Devils.

In 2005-06, NJIT's outstanding home facilities allowed it to host two ECAC Division II postseason championships—women's soccer in the fall and baseball in the spring.

Under Kaplan's leadership, many teams achieved regional and national Division II ranking. Success for several women's teams was unprecedented, with basketball, tennis and soccer all reaching postseason play for the first time.

Additionally, men's volleyball captured a 2007 divisional championship in the Eastern Intercollegiate Volleyball Association.

Before coming to NJIT, Lenny Kaplan served 11 years at Manhattan College, where he began as Manhattan's director of operations and then advanced to assistant athletics director.

Kaplan, a 1988 graduate of St. John's University with a degree in athletics administration, resides in Merrick, NY, with his wife, Nancy, and their sons, Michael and Joshua.

New Jersey Institute of Technology athletics is on the move to the top level of college athletics—NCAA Division I.

The reclassification is well underway, with all of the programs that previously competed in Division II moving up to face Division I competition effective in 2006-07.

The NCAA has okayed NJIT to reclassify its entire athletics program to Division I, a four-year process that will bring all Highlander sports to full Division I status and championship eligibility in 2009-10.

Two sports—men's soccer and women's soccer—are paving the way on a faster NCAA track that allows lower division schools to elevate one sport in each gender to Division I in a process that takes two years to complete.

NJIT men's soccer became a full member of NCAA Division I at the start of the 2005 season, when the Highlanders arrived at championship eligibility. The men's journey

to the top level began in 2003. NJIT women's soccer began a similar two-year process in 2005, with full Division I status and championship eligibility arriving in the 2007 season.

The larger process of advancing the entire program to Division I takes four years to complete and includes application, a detailed strategic plan and in-depth annual review of the institution's progress in moving toward its goal of complying with NCAA Division I rules and building a strong, broad-based athletics program.

NJIT's move to Division I has gone quickly since the November 2002 discussions among President Robert A. Altenkirch, Vice President Joel Bloom and Athletics Director Lenny Kaplan.

From there, came a proposal from Dr. Altenkirch to the Board of Trustees, which unanimously approved in February 2003 a plan to reclassify men's soccer to Division I. Little more than two years later, the NCAA

approved NJIT's proposal to advance its entire program to Division I.

Along the way, scholarship and operating budgets have been enhanced, with expanded coaching staffs, increased scholarship dollars and upgraded facilities for competition and practice.

Upgrading athletics has been a priority for Dr. Altenkirch since he was selected as the seventh President of NJIT in May 2002.

"As NJIT continues to grow academically, and as a residential university, strengthening the athletics program through the transition to Division I will allow us to align the university athletically with our academic peers," said Altenkirch. "It will also enable us to recruit the best and brightest student-athletes, improve athletics facilities available to the entire NJIT community, gain regional and national visibility, and build strong linkages with students that will carry over to their days as alumni."



(left) Danielle Thompson, (right) Agnieszka Pregowska

RYAN MCNEIL*Head Coach*

Ryan McNeil, who joined the NJIT coaching staff in August 2004, is leading a resurgence of the university's two volleyball teams.

Originally hired to be head coach of the men's team and assistant coach of the women's team, he served as interim head coach of the women's team in 2005, with the interim tag removed for the 2006 season. He has been the men's head coach since 2005.

He has made his mark on both teams. On the men's side, taking over a team that last had a winning record in 2000, he guided his first squad to a .500 overall record in 2005. A year later, the Highlander men made the EIVA play-offs for the first time since 2000. And in 2007, NJIT posted a 19-10 record, compiling the program's best wins total since it was 20-13 in 1995. Additionally, NJIT finished first in the EIVA Hay Division with a 9-1 mark and returned to the postseason playoffs.

On the women's side, he assisted on a 2004 team that made a double-digit jump in wins from the previous season.

In 2006, as the permanent head coach, despite playing its first season in Division I and with only two starters returning from the previous year, he oversaw an improved season win total of 10 an improvement over the team's nine wins in its last season at the Division II level in 2005.

Sporting a lineup of three freshmen and four sophomores in the top seven-player rotation, McNeil guided the young 2006 squad to a 7-7 mark over the last 14 matches

Quality volleyball, indeed, championship volleyball is nothing new to McNeil, who was a standout player in both Canada and the United States. Later, as an assistant coach at Lewis University in Illinois, he helped coach the men's team that won the 2003 national championship and the women's team that qualified for two NCAA Tournaments.

A native of Montego Bay, Jamaica, McNeil resided in Ontario, Canada, for 15 years. He was Most Valuable Player of two teams in Canada—Sheridan College in Brampton,

Ontario and Ryerson University in Toronto.

Transferring south of the border to Lewis University in Romeoville, Illinois, McNeil played on the Flyers' 1998 national semifinalists.

He turned to coaching at Lewis, assisting with both the men's and women's teams. In his two years as an assistant with the men, Lewis qualified for the NCAA tournament twice, won two Midwest Intercollegiate Volleyball Conference crowns and captured the national title in 2003.

He coached with the Lewis women for four seasons and during his tenure, the Flyers made the NCAA Tournament twice and achieved national ranking in 2002.

McNeil resides in Newark.

JOSE REYNALDO MARTINS*Assistant Coach*

With a championship background as a volleyball player, Jose Reynaldo (JR) Martins (pronounced mar-TEENS) joined the NJIT coaching staff at the start of the 2006-07 academic year.

The native of Sao Paulo, Brazil, is the assistant to head coach Ryan McNeil with both the Highlanders men's and women's teams.

Martins, a 2004 graduate of Lewis University in Romeoville is also a graduate of Pontific Catholic University of Campinas in his home country.

He was a four-year player at Lewis, where he was also a team captain and played on the Lewis team that captured the 2003 NCAA national championship. A dean's list student for eight semesters at Lewis, he was an Academic All-America in 2004.

A veteran of the Brazilian army, he has coached collegiate volleyball in Brazil and then club volleyball in the Midwestern United States, before returning to Brazil, where he played and coached club ball.

His presence was felt at the beginning of his NJIT tenure, as he helped Ryan McNeil coach the Highlander women to a strong opening venture into Division I competition and then the men's team to a 19-10 overall record and the Eastern Intercollegiate Volleyball Association Hay Division championship.



Positives abound as NJIT prepares for its second season facing NCAA Division I competition.

In 2006, the first season of Division I competition and with only two starters back from the previous year, NJIT won 10 matches. Included was a 7-7 finish with a top seven made up completely of first and second-year players.

This year, all seven are back, fortified by a group that includes two freshmen, two transfers and returning redshirts Ashley Craig and Kasia Rusin.

Four players—Craig, Rusin, Kubra Tanrikulu and Rebecca Wilkinson—entered NJIT as in 2004 and helped produce the school's best Division II record. Tanrikulu and Wilkinson started all 26 matches and Craig started 24 for a team that was 13-13 in 2004.

Tanrikulu and Wilkinson missed 2005 and returned in 2006, while Craig and Rusin played in 2005, but not in 2006.

The 2005 season saw the arrival of Agnieszka Pregowska and Danielle Thompson, who assumed leading on-court roles as freshmen in NJIT's final Division II campaign.

Three more key players—Kristy Haeckel, Kasha Hornstein and Sabrina Baby—came on in 2006.

This year, sophomore transfers Erica Schultz and Katlyn Lewis come in having made their marks as freshmen at Louisiana Tech and Division III Rutgers-Newark, respectively.

The two 2007 rookies are Victoria Gill, a middle from New Jersey, and Baaba Hughes, an outside hitter from Canada.

Rusin, one of just two who appeared in all 29 matches in 2005, was second that season with 242 kills. Craig, the 2004 starting setter, was a utility player in 2005. She is a tireless worker and all-around player.

Tanrikulu and Wilkinson returned in 2006. The versatile Tanrikulu was second on the 2004 team in kills, assists, service aces and total digs. Last year, she ranked fourth in points, kills and digs per game. Wilkinson, who led the 2004 team in blocks, solidified NJIT's middle in 2006, leading front line players in attack percentage and finishing second in blocks.

Sabrina Baby



Pregowska and Thompson entered with a splash 2005 and were solid in 2006. Pregowska, New Jersey's 2004 state high school Player of the Year, was an instant star for NJIT, earning first-team all-conference and ranking fourth nationally in NCAA Division II in kills per game for 2005. Last year, with a more diverse attack, she was second in points per game and third in digs per game and attack percentage.

Thompson, a two-year starting setter, averaged more assists per game in Division I than she had in Division II, stepping up to average 9.56 assists in 2006.

Haeckel headlined the strong 2006 freshman class, emerging as team leader in kills, blocks and points per game. She was named Female Newcomer of the Year for the entire Highlander athletic program.

Hornstein, a complete player, wasn't far behind Haeckel on the attack and was second on the team in digs per game. Baby led the Highlanders in digs and service aces per game.

Both 2007 transfers did well as freshmen elsewhere. Schultz appeared in 29 matches and had eight double-figure digs nights at Louisiana Tech and Lewis was second team all-New Jersey Athletic Conference for Rutgers-Newark.

The incoming freshmen, Hughes and Gill, will challenge the returnees for playing time, while also adding depth to a team whose biggest weakness was lack of the same in 2006.

"The number of players alone should account for four or five more wins than we had last year," said McNeil. "Players won't have to play at less than 100 percent. Practices will be better and the players will push each other for playing time."

With the optimism, NJIT faces a challenging schedule that includes two home tournaments and visits to tournaments hosted by Central Connecticut, St. John's (which reached the second round of the 2006 NCAA Tournament), Navy, Tulsa and Harvard.

The season ends with a trip to Utah Valley and the Division I Independent Tournament.

"Facing good teams is going to be a great experience," said McNeil. "We may not win them all, but we'll come out with our heads held high and new respect from those top programs."

NUMERICAL

| No. | Name | Yr. | Pos. | Ht. | Hometown/High School (Previous College) |
|-----|---------------------|-----|------|------|---|
| 1 | Kubra Tanrikulu | Jr. | OH | 5'8 | Manahawkin, NJ/Southern Regional |
| 2 | Katlyn Lewis | So. | OH | 5'7 | Hillsdale, NJ/Pascack Valley (Rutgers-Newark) |
| 3 | Agnieszka Pregowska | Jr. | RS | 5'11 | Warsaw, Poland/Bridgewater-Raritan |
| 4 | Kristy Haeckel | So. | RS | 6'1 | St. Louis, MO/Nerinx Hall |
| 5 | Danielle Thompson | Jr. | S | 5'11 | Stony Brook, NY/Ward Melville |
| 6 | Erica Schultz | So. | S/L | 5'8 | Wildomar, CA/Elsinore (Louisiana Tech) |
| 7 | Baaba Hughes | Fr. | OH | 5'7 | Toronto, Ontario/Mother Teresa Catholic |
| 8 | Sabrina Baby | So. | OH/L | 5'5 | Florianopolis, Brazil/Catarinense |
| 9 | Kasia Rusin | Jr. | MB | 5'11 | Clifton, NJ/Clifton |
| 10 | Katrina Hornstein | So. | OH | 5'10 | Duluth, MN/Marshall School |
| 11 | Rebecca Wilkinson | Jr. | MB | 6'1 | Gaithersburg, MD/Gaithersburg |
| 12 | Ashley Craig | Jr. | S | 5'6 | Laurel, MD/Laurel |
| 13 | Victoria Gill | Fr. | MB | 5'5 | Mahwah, NJ/Mahwah |

ALPHABETICAL

| No. | Name | Yr. | Pos. | Ht. | Hometown/High School (Previous College) |
|-----|---------------------|-----|------|------|---|
| 8 | Sabrina Baby | So. | OH/L | 5'5 | Florianopolis, Brazil/Catarinense |
| 12 | Ashley Craig | Jr. | S | 5'6 | Laurel, MD/Laurel |
| 13 | Victoria Gill | Fr. | MB | 5'5 | Mahwah, NJ/Mahwah |
| 4 | Kristy Haeckel | So. | RS | 6'1 | St. Louis, MO/Nerinx Hall |
| 10 | Katrina Hornstein | So. | OH | 5'10 | Duluth, MN/Marshall School |
| 7 | Baaba Hughes | Fr. | OH | 5'7 | Toronto, Ontario/Mother Teresa Catholic |
| 2 | Katlyn Lewis | So. | OH | 5'7 | Hillsdale, NJ/Pascack Valley (Rutgers-Newark) |
| 3 | Agnieszka Pregowska | Jr. | RS | 5'11 | Warsaw, Poland/Bridgewater-Raritan |
| 9 | Kasia Rusin | Jr. | MB | 5'11 | Clifton, NJ/Clifton |
| 6 | Erica Schultz | So. | S/L | 5'8 | Wildomar, CA/Elsinore (Louisiana Tech) |
| 1 | Kubra Tanrikulu | Jr. | OH | 5'8 | Manahawkin, NJ/Southern Regional |
| 5 | Danielle Thompson | Jr. | S | 5'11 | Stony Brook, NY/Ward Melville |
| 11 | Rebecca Wilkinson | Jr. | MB | 6'1 | Gaithersburg, MD/Gaithersburg |

Head Coach: Ryan McNeil (Lewis '01), 3rd year | **Assistant Coach:** Jose Reynaldo (JR) Martins (Lewis, '04)



#1 Kubra TANRIKULU

Junior • OH • 5-8
Manahawkin, NJ/Southern Regional HS

Expected to continue as a quality versatile player after a solid return to action in 2006 ... **Ryan McNeil on Tanrikulu:** "If she plays with confidence in her skills, she can be a great player."

2006: Appeared in 100 games ... fourth on the team in kills (1.99) and digs (2.15). **2005:** Redshirt. ... **2004:** Started every game as a freshman ... second on the team in digs (214), kills (146) and assists (137).

Prior to NJIT: Team MVP three years for coach Eric Maxwell at Southern Regional ... team won two conference championships ... all-state ... member of the swim team ... won two tournament MVP awards while playing for the South Jersey Volleyball Club.

Personal: Kubra H. Tanrikulu. ... Brother Emin Tanrikulu and Bedrine Dogon are her legal guardians. ... her brother coached at Georgian Court University and also the Southern Regional boys team. ... biomedical engineering major. ... born 9/20/86 in Adorna, Turkey.

| Year | GP | KPG | DPG | BPG |
|------|-----|------|------|------|
| 2004 | 93 | 1.57 | 2.30 | 0.08 |
| 2006 | 100 | 1.99 | 2.15 | 0.12 |



#3 Agnieszka PREGOWSKA

Junior • RS • 5-11
Bridgewater, NJ/Bridgewater-Raritan HS

Third-year starter who is poised to continue an outstanding college career. ... **Ryan McNeil on Pregowska:** "She is one of our leaders on the floor and one of the most fundamentally sound players in the program."

2006: With the addition of other attacking threats, her attempts dropped to a little more than half the freshman total (1,481 to 837), but she continued as a strong contributor, finishing third with 2.69 kills, third in digs with 2.56 and third in blocks 0.51. ... Division I Independent Academic honoree ... **2005:** Ranked fourth in the final NCAA Division II statistics in kills per game (5.67) ... all-Central Atlantic Collegiate Conference first team. ... CACC Player of the Week once and Rookie of the Week twice. ... NJIT team MVP ... averaged a team leading 3.27 digs per game and 0.66 aces per.

Prior to NJIT: Selected as New Jersey Gatorade Player of the Year and Star-Ledger state Player of the Year as a senior. ... played for coach Corey Romanak at Bridgewater-Raritan HS (state champions 2003 and 2004). ... numerous all-state, all-county and all-area honors. ... MVP at the 2004 NJ Tournament of Champions ... selected as an all-America by prepvolleyball.com. ... Club team was AVVC. ... also played basketball and ran track.

Personal: Agnieszka Malgorzata Pregowska ... daughter of Maciej Pregowski and Joanna Pregowska ... father played national league in Poland for 10 years ... architecture major ... born 8/18/86 in Warsaw, Poland.

| Year | GP | KPG | DPG | BPG |
|------|-----|------|------|------|
| 2005 | 103 | 5.67 | 3.27 | 0.30 |
| 2006 | 100 | 2.69 | 2.56 | 0.51 |



#5 Danielle THOMPSON

Junior • S • 5-11

Stony Brook, NY/Ward Melville HS

Two-year starting setter. ... **Ryan McNeil on Thompson:** "She showed great improvement last year and if everything goes as planned, she should be the starting setter and put up great numbers."

2006: Led the Highlanders for the second year straight in assists per game with (9.56) up from (9.07) per game a year ago. ... fourth on the team with 1.9 digs per game. ... **2005:** Led NJIT in assists per game (9.07) and was effective as a hitter. Also ranked third in blocks per game (0.45). ... Central Atlantic Collegiate Conference Rookie of the Week on Sept. 26.

Prior to NJIT: Played for coach Charles Fernandes at Ward Melville HS on Long Island and was named first-team all-state, all-county, tournament team player and league Player of the Year in 2004 ... team won the 2004 state championship and was league champion in 2003-04 ... MVP of the 2003 Glen Cove Tournament ... played club volleyball for The Island Volleyball Academy.

Personal: Danielle Renee Thompson. ... daughter of Donald and Renee Thompson ... business major. ... born 10/8/87 in Stony Brook, NY.

| Year | GP | KPG | DPG | BPG |
|------|-----|------|------|------|
| 2005 | 106 | 9.07 | 1.89 | 0.45 |
| 2006 | 101 | 9.56 | 1.90 | 0.31 |



#9 Kasia RUSIN

Junior • MB • 6-0

Clifton, NJ/Clifton HS

Back for her junior season after redshirting in 2006. ... **Ryan McNeil on Rusin:** "She's improved tremendously over the years and she has the potential to be a great asset if she puts in the time and effort to develop her skills."

2006: Redshirt. ... **2005:** One of two players to appear in all 29 matches (102 games) ... second on the team in kills (242) and service aces (30). ... **2004:** Played in 36 games with 26 kills, 17 digs and 13 blocks.

Prior to NJIT: all-Passaic County 2nd team for coach Michael Doktor at Clifton High ... also played basketball ... played club volleyball for the Garden Empire Volleyball Association.

Personal: Katarzyna I. Rusin. ... Daughter of Andrzej and Bogumila Lojek ... cousins Lukasz and Richard Lojek are NJIT graduates ... born 5/12/85 in Krakow, Poland.

| Year | GP | KPG | DPG | BPG |
|------|-----|------|------|------|
| 2004 | 36 | 0.72 | 0.47 | 0.36 |
| 2006 | 102 | 2.37 | 2.48 | 0.26 |



#11 Rebecca WILKINSON

Junior • MB • 6-1

Gaithersburg, MD/Gaithersburg HS

Back for her third season in the middle after a solid return in 2006 ... **Ryan McNeil on Wilkinson:** "If she stays focused and can stay injury-free, she should have a great season."

2006: Co-captain who was a force in the middle. ... second on the team in blocks with (54)... **2005:** Redshirt. ... **2004:** One of just two Highlanders to start every match ... led the team in blocks (49).

Prior to NJIT: Played on three regional champions and three divisional championship team for coach Michelle Dillingham at Gaithersburg HS. ... member of the basketball team and was a hurdler for the track team ... her Metro American Volleyball Club finished 11th on the East Coast in 2002.

Personal: Rebecca J. Wilkinson. ... daughter of Bruce and Linda Wilkinson ... management major. ... born 6/11/86 in Norwich, CT.

| Year | GP | KPG | DPG | BPG |
|------|-----|------|------|------|
| 2004 | 93 | 1.41 | 2.00 | 0.53 |
| 2006 | 100 | 1.37 | 0.29 | 0.54 |



#12 Ashley CRAIG

Junior • S • 5-6

Laurel, MD/Laurel HS

Versatile hard-working player who returns after a redshirt year. ... **Ryan McNeil on Craig:** "It's going to be great having her back to push the other players and challenge for a position."

2006: Redshirt. ... **2005:** Appeared in 98 games ... second on the team in digs (257), 2.62 per game. ... **2004:** As a freshman led the team in assists (712) averaging 8.68 per game.

Prior to NJIT: Two-year captain and two-time all-county for coach Dale Brennan at Laurel High ... team was a county runner-up ... also a member of the basketball team ... was a club teammate of current Highlander Rebecca Wilkinson for the Metro American Volleyball Club ... earned Knights of Columbus Award ... graduated in the top ten percent of her class.

Personal: Ashley Marie Craig. ... daughter of Maria DiSimone ... majoring in biomedical engineering ... born 1/4/86 in Silver Spring, MD.

| Year | GP | KPG | DPG | BPG |
|------|----|------|------|------|
| 2004 | 93 | 8.68 | 1.65 | 0.27 |
| 2005 | 98 | 1.27 | 2.62 | 0.20 |



#4 Kristy HAECKEL

Sophomore • RS • 6-1
St. Louis, MO/Nerinx Hall HS

A skillful, powerful, high energy player who will be a key performer ... **Ryan McNeil on Haeckel:** "She brings leadership to the floor and if she has another year like last year, she should be able to be (Division I) all-Independent."

2006: Haeckel, a freshman, was named Female Newcomer of the Year for the entire NJIT program, as well as women's volleyball MVP. .. NCAA Division I Independent Newcomer of the Week twice. ... led the Highlanders in kills (2.78), blocks (0.81) and points per game (3.74). ... started all 31 matches, while posting 11 double-figure kills games, with a career-high 30 kills against Maryland Eastern-Shore on November 4.

Prior to NJIT: All-Tournament at Effingham, IL, playing for coach Helen Buckley at Nerinx Hall HS in Webster Grove, MO. ... had 145 kills and 70 blocks as a senior in a league that produced the 2004 national Player of the Year. ... most improved on her high school team. ... played club volleyball for coach Shannon Hesseldenz on the Southwest Illinois VC. ... also competed in high school track and field.

Personal: Kristine Melanie Haeckel ... daughter of Robert and Elizabeth Haeckel. ... civil engineering major. ... born 3/4/88 in St. Louis.

| Year | GP | KPG | DPG | BPG |
|------|-----|------|------|------|
| 2006 | 101 | 2.78 | 1.33 | 0.81 |



#8 Sabrina BABY

Sophomore • OH • 5-5
Florianopolis, Brazil/Catarinense

Excellent defensive player, with all-around skills ... **McNeil on Baby:** "She has great fundamentals and she is the most consistent player we have."

2006: Appeared in 94 games leading the Highlanders defense with a total of 356 digs, 3.79 per game and topped the team in aces with 49.

Prior to NJIT: Played club volleyball in her native Brazil.

Personal: Sabrina Bianca Baby. ... daughter of Joao Batista Baby ... business administration major. ... born 4/25/88 in Florianopolis, Brazil.

| Year | GP | KPG | DPG | BPG |
|------|----|------|------|------|
| 2006 | 94 | 0.29 | 0.52 | 3.79 |



#10 Katrina HORNSTEIN

Sophomore • OH • 5-10
Duluth, MN/Marshall School

Another strong all-around player who is back after making an impact as a freshman. ... **Ryan McNeil on Hornstein:** "Kat is a very self-motivated player who should put up even better numbers with a year under her belt."

2006: Appearing in 101 games, was third in points per game, second in kills per game, third in aces and second in digs in her first year as a Highlander.

Prior to NJIT: All-conference for Marshall School in Duluth, MN. ... Duluth News Tribune Prep Newsmaker and Prep Performance honoree. ... second in the Duluth area in kills per game and was ranked in serve percentage. ... Minnesota all-state nominee. ... Duluth team MVP in the Pepsi All-Star game. ... played club volleyball for East End Volleyball Club. ... also competed in basketball and track and field and was 10th in the high jump at the 2006 Lake Superior championships.

Personal: Katrina Rachel Hornstein ... daughter of Theresa Hornstein and Terry Weins. ... mechanical engineering major enrolled in NJIT's Albert Dorman Honors College. ... born 12/23/88 in Duluth, MN.

| Year | GP | KPG | DPG | BPG |
|------|-----|------|------|------|
| 2006 | 101 | 2.72 | 3.17 | 0.26 |



#2 Katlyn LEWIS

Sophomore • OH • 5-7
Hillsdale, NJ/Pascack Valley HS

Transfer from neighboring Rutgers-Newark, where she was all-conference in the NJAC, a strong Division III conference. ... **Ryan McNeil on Lewis:** "She's a player coming in who will increase the quality and intensity of practice and push for a starting position."

Prior to NJIT: Second team all-New Jersey Athletic Conference as a freshman at Rutgers-Newark. ... NJAC Rookie of the Week three times, she led Rutgers-Newark with 305 kills and was second with 378 points. ... averaged 2.66 kills and 3.49 digs per game, adding 51 service aces for a team that was 23-12 and qualified for postseason play. ... All-Bergen County, All-NBIL and All-State North 1 Group 2 after Pascack Valley HS earned a state championship and its third straight conference title in 2005. ... second-team All-NBIL as a sophomore and junior. ... Played for the Cutshot Volleyball Club since 2001, where her coach was former NJIT men's coach Manny Del Rio.

Personal: Katlyn A. Lewis. ... daughter of Gary and Linda Lewis. ... math major ... born 7/15/88 in Westwood, NJ.

| Year | GP | KPG | DPG | BPG |
|-------|----|------|------|------|
| 2006* | 94 | 2.66 | 0.43 | 3.49 |

*—at Rutgers, Newark



#6 Erica SCHULTZ

Sophomore • S/L • 5-8
Wildomar, CA/Elsinore HS

California native is a transfer from Louisiana Tech, where she was a quality contributor as a freshman. ... **Ryan McNeil on Schultz:** "She should push Danielle (Thompson) for the job as setter and she will make us a stronger team in matches and in practices."

Prior to NJIT: Playing for Louisiana Tech, she was in 29 matches (90 games) as a freshman. ... Playing defensive specialist, she had eight double-figure digs matches, topped by 20 vs. Texas-Arlington. ... she had 13 assists (high of four vs. Northwestern State) and 7 aces. ... In high school: lettered four years for coach Kim Horton at Elsinore HS and was named first team all-league all four years ... first freshman in school history of school to make varsity volleyball as a freshman... helped Tigers to league championships 2003, 2004 and 2005... first team All-Valley her junior and senior year... captain her senior year... was named Mountain Volleyball Classic first team in 2005... finished on Riverside County All-Star team as a senior. ... lettered in track.

Personal: Erica Lynn Schultz. ... daughter of John and Monica Schultz. ... architecture major ... born 7/2/88 in Orange, CA. ... on Superintendent's Honor Roll all four years of high school... also on Top 25 Students all four years.

| Year | GP | KPG | DPG | BPG |
|---------------------|----|------|------|------|
| 2006* | 90 | 0.08 | 0.14 | 1.93 |
| *—at Louisiana Tech | | | | |



#7 Baaba HUGHES

Freshman • OH • 5-7
Toronto, ON/Mother Teresa Catholic HS

Canadian import is expected to add to NJIT's attack. ... **Ryan McNeil on Hughes:** "She's a needed addition to the program as an outside. Having another player who can put the ball away will increase our winning percentage."

Prior to NJIT: Graduated from Mother Teresa Catholic High School, where she competed in track in addition to playing on the 2007 Ontario Provincial volleyball champions. ... in track and field, she was a medalist in the long jump and triple jump. ... played club volleyball for the Durham Region Volleyball Club coached by Josh Ovsenek.

Personal: Baaba Hughes. ... daughter of May and Chas Hughes. ... communications major. ... high school valedictorian ... born 3/23/89 in Toronto, Ontario.



Kristy Haeckel



#13 Victoria GILL

Freshman • M • 5-5
Mahwah, NJ/Mahwah HS

Freshman is expected to add depth to the squad for matches and practice. ... **Ryan McNeil on Gill:** "Her presence on the team will help us with more competitive practices as she adjusts to college volleyball."

Prior to NJIT: All-league first team playing for coach Carol Daniele at Mahwah HS. ... also lettered in basketball and softball at Mahwah. ... played club volleyball for Cutshot, where her coach was former NJIT men's volleyball coach Manny Del Rio. NJIT teammate Katlyn Lewis also comes out of the Cutshot Club.

Personal: Victoria Lynn Gill. ... daughter of Ann Gill. ... undecided as to her major at NJIT. ... born 2/9/89 in Teaneck, NJ.

NJITCombined Team Stats
(All Matches)

| | | | | |
|---------------------|---------|---------|---------|---------|
| RECORD : | OVERALL | HOME | AWAY | NEUTRAL |
| ALL MATCHES..... | (10-21) | (6-3) | (2-11) | (2-7) |
| CONFERENCE..... | (0-0) | (0-0) | (0-0) | (0-0) |
| NON-CONFERENCE..... | (10-21) | (6-3) | (2-11) | (2-7) |

| ## | STATS SUMMARY | ATTACK | | | | | SET | | SERVE | | | RE | DIG | | BLOCKING | | | | | B/G | BE | BHE | Points |
|----------------|----------------------|--------|-----|------|-----|-----|------|-----|-------|----|----|------|------|-----|----------|----|----|-------|------|-----|----|-------|--------|
| | | G | K | K/G | E | TA | Pct | A | A/G | SA | SE | | SA/G | DIG | D/G | BS | BA | Total | | | | | |
| 4 | HAECKEL, Kristy | 101 | 281 | 2.78 | 117 | 725 | .226 | 25 | 0.25 | 44 | 60 | 0.44 | 3 | 134 | 1.33 | 23 | 59 | 82 | 0.81 | 7 | 3 | 377.5 | |
| 10 | HORNSTEIN, Kasha | 101 | 275 | 2.72 | 141 | 828 | .162 | 24 | 0.24 | 37 | 36 | 0.37 | 66 | 320 | 3.17 | 1 | 25 | 26 | 0.26 | 4 | 2 | 325.5 | |
| 3 | PREGOWSKA, Agnieszka | 100 | 269 | 2.69 | 152 | 837 | .140 | 40 | 0.40 | 33 | 32 | 0.33 | 15 | 256 | 2.56 | 9 | 42 | 51 | 0.51 | 3 | 2 | 332.0 | |
| 1 | TANRIKULU, Kubra | 100 | 199 | 1.99 | 161 | 804 | .047 | 30 | 0.30 | 24 | 40 | 0.24 | 45 | 215 | 2.15 | 0 | 12 | 12 | 0.12 | 6 | 3 | 229.0 | |
| 11 | WILKINSON, Rebecca | 100 | 137 | 1.37 | 58 | 348 | .227 | 6 | 0.06 | 2 | 14 | 0.02 | 1 | 29 | 0.29 | 11 | 43 | 54 | 0.54 | 5 | 3 | 171.5 | |
| 5 | THOMPSON, Danielle | 101 | 77 | 0.76 | 22 | 208 | .264 | 966 | 9.56 | 22 | 28 | 0.22 | 0 | 192 | 1.90 | 3 | 28 | 31 | 0.31 | 5 | 30 | 116.0 | |
| 2 | GYURICZA, Emese | 9 | 3 | 0.33 | 0 | 7 | .429 | 1 | 0.11 | 0 | 1 | 0.00 | 3 | 0 | 0.00 | 0 | 0 | 0 | 0.00 | 0 | 0 | 3.0 | |
| 8 | BABY, Sabrina | 94 | 27 | 0.29 | 17 | 123 | .081 | 49 | 0.52 | 57 | 41 | 0.61 | 48 | 356 | 3.79 | 0 | 0 | 0 | 0.00 | 0 | 3 | 84.0 | |
| 6 | KASEM, Fatima | 8 | 0 | 0.00 | 0 | 0 | .000 | 2 | 0.25 | 0 | 0 | 0.00 | 6 | 11 | 1.38 | 0 | 0 | 0 | 0.00 | 0 | 0 | 0.0 | |
| TEAM | | | | | | | | | | | | | | | | | | | | | | | |
| NJIT..... | | | | | | | | | | | | | | | | | | | | | | | |
| Opponents..... | | | | | | | | | | | | | | | | | | | | | | | |

| TEAM STATISTICS | NJIT | OPP | DATE | OPPONENT | W/L | SCORE | SCORE-BY-GAME | ATTEND |
|----------------------|-------|--------|----------|------------------------|-----|-------|------------------------------|--------|
| ATTACK..... | | | Aug 25 | at St. Peter's | L | 1-3 | 25-30,30-21,24-30,23-30 | 50 |
| Kills..... | 1268 | 1195 | Aug 26 | at Army | L | 0-3 | 17-30,23-30,15-30 | 212 |
| Errors..... | 668 | 484 | Sep 1 | at Manhattan | W | 3-0 | 30-19,30-25,30-23 | 55 |
| Total Attacks..... | 3880 | 3187 | Sep 2 | at American University | L | 0-3 | 22-30,22-30,22-30 | 79 |
| Attack Pct..... | .155 | .223 | Sep 2 | HOWARD UNIVERSITY | W | 3-0 | 30-22,30-25,30-16 | 45 |
| Kills/Game..... | 12.6 | 11.8 | 09/06/06 | at Long Island | L | 0-3 | 25-30,14-30,18-30 | 82 |
| SET..... | | | Sep 08 | at Columbia | L | 0-3 | 27-30,25-30,24-30 | 147 |
| Assists..... | 1143 | 1087 | Sep 09 | vs Hofstra | L | 0-3 | 25-30,21-30,24-30 | 88 |
| Assists/Game..... | 11.3 | 10.8 | Sep 09 | vs Hartford | L | 1-3 | 27-30,30-28,29-31,24-30 | - |
| SERVE..... | | | % Sep 15 | at Fordham | L | 0-3 | 17-30,23-30,28-30 | 89 |
| Aces..... | 219 | 179 | % Sep 15 | vs St. Peter's | W | 3-0 | 30-18,30-27,30-22 | 45 |
| Errors..... | 252 | 220 | % Sep 16 | vs Maine | L | 0-3 | 18-30,32-34,18-30 | 45 |
| Aces/Game..... | 2.2 | 1.8 | % Sep 16 | vs Tulsa | L | 0-3 | 26-30,18-30,14-30 | 68 |
| SERVE RECEPTIONS.... | | | Sep 21 | SAN FRANCISCO | L | 0-3 | 21-30,15-30,16-30 | 131 |
| Errors..... | 224 | 183 | Sep 29 | vs Robert Morris | L | 0-3 | 22-30,21-30,20-30 | 25 |
| Errors/Game..... | 2.2 | 1.8 | Sep 30 | at Dartmouth College | L | 0-3 | 19-30,27-30,18-30 | 75 |
| DEFENSE..... | | | Sep 30 | vs Harvard | L | 0-3 | 17-30,17-30,23-30 | 45 |
| Digs..... | 1513 | 1428 | Oct 03 | QUINNIPIAC | W | 3-0 | 30-19,30-26,30-25 | 160 |
| Digs/Game..... | 15.0 | 14.1 | Oct 04 | at Lafayette | L | 1-3 | 21-30,30-27,25-30,18-30 | 74 |
| BLOCKING..... | | | 10/7/06 | at Fairleigh Dickinson | L | 1-3 | 30-28,23-30,23-30,26-30 | 57 |
| Block Solo..... | 47 | 43 | 10/7/06 | WAGNER | W | 3-0 | 30-22,30-26,30-20 | 78 |
| Block Assist..... | 209 | 248 | Oct 11 | ARMY | L | 0-3 | 25-30,19-30,22-30 | 155 |
| Total Blocks..... | 151.5 | 167.0 | Oct 20 | vs Winston-Salem State | W | 3-0 | 30-18,30-14,30-11 | 157 |
| Blocks Per Game... | 1.5 | 1.7 | Oct 21 | at Delaware State | L | 1-3 | 27-30,30-28,28-30,29-31 | 157 |
| Block Errors..... | 30 | 45 | Oct 21 | vs Providence | L | 1-3 | 30-27,25-30,20-30,26-30 | 133 |
| BALL HANDLING ERRORS | 46 | 69 | Oct 25 | WAGNER | W | 3-0 | 30-23,30-15,30-18 | 120 |
| ATTENDANCE..... | | | 10/27/06 | at Central Connecticut | L | 0-3 | 13-30,22-30,23-30 | 162 |
| Total..... | 1003 | 1335 | Nov 01 | ST. FRANCIS (NY) | W | 3-0 | 30-18,30-10,30-10 | 87 |
| Dates/Avg Per Date | 9/111 | 13/103 | Nov 04 | MD-EASTERN SHORE | L | 2-3 | 30-21,30-32,26-30,30-20,9-15 | 118 |
| Neutral site #/Avg | 9/67 | | Nov 08 | MANHATTAN | W | 3-0 | 30-24,30-20,30-23 | 109 |
| Current win streak | 2 | - | Nov 12 | at Sacred Heart | W | 3-0 | 30-26,30-22,30-28 | 96 |
| Home win streak... | 1 | - | | | | | | |

NATIONAL STATISTICAL LEADERS NCAA

1989 Division III

Yanet Gonzalez - services aces per game

1991 Division III

Kathy Eng - services aces per game

2004 Division II

Angie Casado - 38th aces per game

Angie Casado - 4th kills per game

2005 Division II

Agnieszka Pregowska - 4th kills per game

The NJIT men's and women's volleyball teams play their home matches in the newly-renovated gymnasium of the Estelle and Zoom Fleisher Athletic Center.

In the summer of 2006, the Fleisher Athletic Center gym underwent renovation to include installation of a new floor and baskets, new lighting, new sound system and new scoreboards, along with entirely new seating for approximately 1,500 spectators after the first phase of renovation.

The back bay, "C gym," area can be sectioned off from the main floor, making the entire gymnasium useful for intramurals, physical education classes and campus recreation time. It is capable of hosting simultaneous separate events.

The volleyball teams also have access to all of the other facilities in the athletic center. These include the fitness area (containing computer-controlled biking equipment, Cybex resistance units, and an indoor track), a free-weight room and a hammer-strength weight room, four racquetball courts (which can be converted for squash), and a martial arts/fencing center.

A six-lane swimming pool is home to NJIT's men's and women's swimming teams, while the two varsity tennis squads utilize the four lighted outdoor hardcourt tennis courts behind the building. The NJIT Campus Center houses six regulation bowling lanes.



Lubetkin Field, with an entrance a few feet opposite the entry to Fleisher Athletic Center is a first-class venue for college soccer. Outfitted with SprinTurf artificial grass in the summer of 2004, Lubetkin Field also

includes lighting for night contests, bleacher seating for more than 1,000 spectators, a press box and scoreboard.

Bears and Eagles Riverfront Stadium in downtown Newark, opened in 1999 at a cost of \$30 million and with a seating capacity of 6,200 became the home of NJIT baseball in 2004.

In a joint December 2005 press conference, New York Yankees manager Joe Torre was a featured speaker as NJIT and the professional Newark Bears announced a 10-year partnership that secured the downtown stadium as the site of all Highlanders home games for the decade to come.

NJIT basketball will also be a tenant in the new downtown Prudential Center, the state-of-the-art home of the National Hockey League New Jersey Devils. The Highlanders expect to host at least one game and possibly more, depending on schedules and availability, in 'The Rock' starting in 2007-08.

NJIT, which offers a growing list of club sports, also has a robust intramural program, which makes use of the numerous athletic facilities. Each student must pass two physical education classes as a graduation requirements, with offerings including aerobics, archery, bowling, dance, fencing, golf, karate, swimming, skiing, strength training and conditioning, volleyball, and water safety.



AMERICAN UNIVERSITY

Oct. 31, 7 pm, at Washington, DC

General Information**Location:** Washington, DC**Founded:** 1893**Enrollment:** 5,250 (undergraduate)**Nickname/Colors:** Eagles/AU Red, White and Blue**Home Court:** Bender Arena**Conference:** Patriot League**President (Interim):** Dr. Neil Kerwin**Director of Athletics:** Keith GillSports Information**Volleyball Contact:** Andrew Chesebro**Office phone:** 202-885-3030**E-mail:** Chesebro@american.eduWomen's Volleyball**Head coach (alma mater, year):** Barry Goldberg

(Pittsburgh '84)

Career record (years): 448-170 (18)**Record at school (years):** same**2006 overall/conf. (finish):** 25-7/14-0 (1st)**Postseason:** Patriot League champs/NCAA (lost 1st round)**Returning/lost (starters):** 13 (5)/1 (1)**ARMY**

Aug. 28, 7 pm, at West Point, NY

General Information**Location:** West Point, NY**Founded:** 1802**Enrollment:** 4,000**Nickname/colors:** Black Knights/ Black Gold and Gray**Home Arena (capacity):** Gillis Field House (2,000)**Conference:** Patriot League**Superintendent:** Lt. General Franklin L. Hagenbeck**Director of Athletics:** Kevin AndersonSports Information**Volleyball Contact:** Tracy Nelson**Office phone:** 845-938-4090**E-mail:** tracy.nelson@usma.eduWomen's Volleyball**Head coach (alma mater, year):** Alma Kovaci (Temple, '02)**Career record (years):** first season**Record at school (years):** same**2006 overall/conf. (finish):** 21-8/11-3 (2nd)**Returning/lost (starters):** 9 (5)/4 (1+libero)**CAL STATE BAKERSFIELD**

Nov. 16-Nov. 17 at Orem, UT

(Division I Independent Tournament)

General Information**Location:** Bakersfield, CA**Founded:** 1970**Enrollment:** 8,000**Nickname/colors:** Roadrunners/ Blue and Gold**Home Arena (capacity):** Icardo Center (3,880)**Conference:** Independent**President:** Dr. Horace Mitchell**Director of Athletics:** Rudy CarvajalSports Information**Volleyball Contact:** Kevin Gilmore**Office phone:** 661-654-6071**E-mail:** kgilmore@csub.eduWomen's Volleyball**Head coach (alma mater, year):** John Price

(CSU Northridge, '83)

Career record (years): 204-103 (11)**Record at school (years):** 192-86 (10)**2006 overall:** 4-16**Returning/lost (starters):** 9 (6+libero)/0 (0)**CENTRAL CONNECTICUT STATE UNIVERSITY**

Aug. 25, 12:30 pm, at New Britain, CT

(Central Connecticut State Tournament)

Sept. 8, 11 am, at Annapolis, MD

(Trident Classic)

General Information**Location:** New Britain, CT**Founded:** 1849**Enrollment:** 12,000**Nickname/colors:** Blue Devils/ Blue and White**Home Arena (capacity):** William H. Detrick Gymnasium (2,654)**Conference:** Northeast**President:** Dr. Jack Miller**Director of Athletics:** Charles "CJ" JonesSports Information**Volleyball Contact:** Jason Stronz**Office phone:** 860-832-3057**E-mail:** stronzjam@mail.ccsu.eduWomen's Volleyball**Head coach (alma mater, year):** Linda Sagnelli (C.W. Post, '83)**Career record (years):** 245-270 (21)**Record at school (years):** 117-88 (7)**2006 overall record/conf. record (finish):** 19-10/5-3 (t-3rd)**Returning/lost (starters):** 10 (5)/3 (2)**CHICAGO STATE UNIVERSITY**

Nov. 16-Nov. 17 at Orem, UT

(Division I Independent Tournament)

General Information**Location:** Chicago, Ill.**Founded:** 1867**Enrollment:** 7,200**Nickname/colors:** Cougars/ Evergreen and White**Home Arena (capacity):** Jacoby Dickens Center (2,500)**Conference:** Independent**President:** Dr. Elnora Daniel**Director of Athletics:** Wayne BakervilleSports Information**Volleyball Contact:** Ruben Perez**Office phone:** 773-995-2217**E-mail:** rperez@csu.eduWomen's Volleyball**Head coach (alma mater, year):** Lenika Lamar

(Southern Illinois '01)

Career record (years): 2-28 (1)**Record at school (years):** same**2006 overall record:** 1-31**Returning/lost (starters):** 7 (5)/4 (1)**COLUMBIA UNIVERSITY**

Sept. 29, 6 pm, Fleisher Athletic Center

(NJIT Invitational)

General Information**Location:** New York, NY**Founded:** 1754**Enrollment:** 5,621**Nickname/colors:** Lions/ Columbia Blue & White**Home Court (capacity):** Levien Gymnasium (2,700)**Conference:** Ivy League**President:** Lee C. Bollinger**Director of Athletics:** Dr. M Dianne MurphySports Information**Volleyball Contact:** Darlene Camacho**Office phone:** 212-854-2535**E-mail:** dc2165@columbia.eduWomen's Volleyball**Head coach (alma mater, year):** Monica Holmes

(UNC-Charlotte '92)

Career record (years): 16-81 (4)**Record at school (years):** same**2006 overall record/conf. record (finish):** 7-17/1-13 (8th)**DARTMOUTH UNIVERSITY**

Sept. 22, 10 am, at Cambridge, MA

(Harvard Tournament)

General Information**Location:** Hanover, NH**Founded:** 1769**Enrollment:** 4,300**Nickname/colors:** Big Green/ Dartmouth Green and White**Home Court (capacity):** Leede Arena (2,100)**Conference:** Ivy League**President:** James Wright**Director of Athletics:** Josie HarperSports Information**Volleyball Contact:** Heather Croze**Office phone:** 603-646-2468**E-mail:** heather.a.croze@dartmouth.eduWomen's Volleyball**Head coach (alma mater, year):** Ann Marie Larese

(UMass '89)

Career record (years): 159-184 (13)**Record at school (years):** same**2006 overall record/conf. record (finish):** 12-12/6-8 (4th)**Returning/lost (starters):** 9 (5)/5 (2)**DELAWARE STATE UNIVERSITY**

Nov. 10, 7 pm, Fleisher Athletic Center

General Information**Location:** Dover, DE**Founded:** 1891**Enrollment:** 3,800**Nickname:** Lady Hornets**Colors:** Columbia Blue and Red**Home Court (capacity):** Memorial Hall**Conference:** Mid-Eastern Athletic Conference**President:** Dr. Allen Sessions**Director of Athletics:** Rick CostelloSports Information**Volleyball Contact:** Dennis Jones**Office phone:** 302-857-6077**E-mail:** djones@desu.eduWomen's Volleyball**Head coach (alma mater, year):** Renee Arnold

(George Washington '01)

Career record (years): 27-42 (2)**Record at school (years):** same**2006 overall record/conf. record (finish):** 11-23/6-5 (5th)**Returning/lost (starters):** 7(6)/2 (0)**FAIRFIELD UNIVERSITY**

Sept. 1, 5 pm, at Jamaica, NY

(St. John's Tournament)

General Information**Location:** Fairfield, CT**Founded:** 1942**Enrollment:** 3,300**Nickname/colors:** Stags/ Cardinal Red**Home Court (capacity):** Alumni Hall (2,479)**Conference:** Metro Atlantic Athletic (MAAC)**President:** Fr. Jeffery A. Von Arx, S.J.**Director of Athletics:** Gene P. DorisSports Information**Volleyball Contact:** Kelly McCarthy**Office phone:** 203-254-4000, ext. 2877**E-mail:** kmccarthy@mail.fairfield.eduWomen's Volleyball**Head coach (alma mater, year):** Jeff Werneke (Samford '96)**Career record (years):** 90-73 (5)**Record at school (years):** same**2006 overall record/conf. record (finish):** 24-8/18-0 (1st)**Returning/lost (starters):** 9 (5+libero)/2 (1)

FAIRLEIGH DICKINSON UNIVERSITY

Sept. 26, 7 pm, Fleisher Athletic Center
Nov. 7, 7 pm, at Hackensack, NJ

General Information

Location: Teaneck, NJ

Founded: 1942

Enrollment: 5,753

Nickname/colors: Knights/ Burgundy and Blue

Home Arena (capacity): Rothman Center (4,500)

Conference: Northeast Conference

President: Dr. J. Michael Adams

Director of Athletics: David A. Langford

Sports Information

Volleyball Contact: Wes Heinel

Office phone: 201-692-2204

E-mail: heinelwr@fdu.edu

Women's Volleyball

Head coach: Stacey Recanati

Career record (years): 187-318 (17)

Record at school (years): same

2006 overall record/conf. record (finish): 17-13/4-4 (T-5th)

Returning/lost (starters): 8 (5+libero)/2 (2)

**GRAMBLING STATE UNIVERSITY**

Sept. 15, 9 am, at Tulsa, OK
(Tulsa Invitational)

General Information

Location: Grambling, LA

Founded: 1901

Enrollment: 4,500

Nickname/colors: Lady Tigers/Black and Gold

Home Court (capacity): Memorial Gymnasium (2,200)

Conference: Southwestern Athletic

President: Dr. Horace A. Judson

Director of Athletics: Troy Mathieu

Sports Information

Volleyball Contact: Ashanti Bradford

Office phone: 318-274-6562

E-mail: bradforda@gram.edu

Women's Volleyball

Head coach (alma mater, year): Kim Young

(Grambling State '01)

Career record (years): 65-47 (3)

Record at school (years): same

2006 overall record/conf. record (finish): 15-17/7-1 (1st)

Returning/lost (starters): 7 (5)/6 (2)

**UNIVERSITY OF HARTFORD**

Sept. 21, 4 pm, at Cambridge, MA
(Harvard Tournament)

General Information

Location: West Hartford, CT

Founded: 1877

Enrollment: 4,722

Nickname/colors: Hawks/Scarlet and White

Home Arena (capacity): The Sports Center Intramural Gym (250)

Conference: America East

President: Walter Harrison

Director of Athletics: Patricia H. Meiser

Sports Information

Volleyball Contact: Dan Ruede

Office phone: 860-768-4501

E-mail: ruede@hartford.edu

Women's Volleyball

Head coach (alma mater, year): Don Ferguson (Rivier '00)

Career record (years): 16-42 (2)

Record at school (years): same

2006 overall record/conf. record (finish): 8-20/0-12 (7th)

Returning/lost (starters): 9 (6)/1 (1)

**HARVARD UNIVERSITY**

Sept. 22, 7 pm, at Cambridge, MA
(Harvard Tournament)

General Information

Location: Cambridge, MA

Founded: 1636

Enrollment: 6,613

Nickname/colors: Crimson/Crimson, Black and White

Home Court: Malkin Athletic Center

Conference: Ivy League

President: Derek C. Bok (interim)

Director of Athletics: Robert L. Scalise

Sports Information

Volleyball Contact: Heather Palmer

Office phone: 617-495-2206

E-mail: palmer2@fas.harvard.edu

Women's Volleyball

Head coach (alma mater, year): Jen Weiss (Bentley '88)

Career record (years): 193-200 (14)

Record at school (years): same

2006 overall record/conf. record (finish): 11-14/5-9 (6th)

Returning/lost (starters): 13 (5)/2 (1+libero)

**HOWARD UNIVERSITY**

Oct. 27, 10 am, Fleisher Athletic Center
(Highlander Invitational)

General Information

Location: Washington, DC

Founded: 1867

Enrollment: 10,500

Nickname/colors: Bison/Navy Blue, Red & White

Home Court (capacity): Burr Gymnasium (2,700)

Conference: Mid-Eastern Athletic Conference (MEAC)

President: H. Patrick Swygert

Director of Athletics: Dwight Datcher

Sports Information

Volleyball Contact: Chevonne Mansfield

Office phone: 202-806-7182

E-mail: cmansfild@howard.edu

Women's Volleyball

Head coach (alma mater, year): Orlando Larracuent

(University of Mass-Amherst '81)

Career record (years): 9-19 (1)

Record at school (years): same

2006 overall record/conf. record (finish): 9-19/4-6 (7th)

Returning/lost (starters): 5 (3)/6 (3)

**LAFAYETTE COLLEGE**

Sept. 11, 7 pm, Fleisher Athletic Center

General Information

Location: Easton, PA

Founded: 1826

Enrollment: 2,381 (undergraduate)

Nickname/colors: Leopards/Maroon and White

Home Court: Allan P. Kirby Sports Center

Conference: Patriot League

President: Daniel H. Weiss

Director of Athletics: Bruce E. McCutcheon

Sports Information

Volleyball Contact: Katie Meier

Office phone: 610-330-5118

E-mail: mcieirk@lafayette.edu

Women's Volleyball

Head coach (alma mater, year): Terri Dadio

Campbell (Lafayette '92)

Career record (years): 58-89 (5)

Record at school (years): same

2006 overall record/conf. record (finish): 18-10/9-5 (4th)

Returning/lost (starters): 11 (7)/3 (3)

**MARIST COLLEGE**

Sept. 8, 4 pm, at Annapolis, MD
(Trident Classic)

General Information

Location: Poughkeepsie, NY

Founded: 1929

Enrollment: 4,000

Nickname/colors: Red Foxes/Red and White

Home Court: McCann Center

Conference: Metro Atlantic Conference (MAAC)

President: Dr. Dennis J. Murray

Director of Athletics: Tim Murray

Sports Information

Volleyball Contact: Mike Ferraro

Office phone: 845-575-3699, ext. 2150

E-mail: Michael.J.Ferraro@marist.edu

Women's Volleyball

Head coach (alma mater, year): Tom Hanna (Marist '91)

Career record (years): 11-19 (1)

Record at school (years): same

2006 overall record/conf. record (finish): 11-19/8-10 (5th)

Returning/lost (starters): 5 (4)/7 (3)

**MORGAN STATE UNIVERSITY**

Sept. 18, 7 pm, Fleisher Athletic Center
Oct. 17, 7 pm, at Baltimore, MD

General Information

Location: Baltimore, MD

Founded: 1867

Enrollment: 7,500

Nickname/colors: Lady Bears/Blue and Orange

Home Court: Hill Field House

Conference: Mid-Eastern Athletic

President (Interim): Dr. Earl S. Richardson

Director of Athletics: Floyd Kerr

Sports Information

Volleyball Contact: Kevin Paige

Office phone: 443-885-3009

E-mail: ravenspr26@aol.com

Women's Volleyball

Head coach (alma mater, year): Ramona Riley-Bozier

(Morgan State '84)

Career record (years): 345-264 (19)

Record at school (years): same

2006 overall record/conf. record (finish): 23-9/9-1 (2nd)

Returning/lost (starters): 10 (4+libero) /1 (1-1)

**NAVY**

Sept. 7, 7 pm, at Annapolis, MD
(Trident Classic)

General Information

Location: Annapolis, MD

Founded: 1845

Enrollment: 4,200

Nickname/colors: Midshipmen, Mids/Navy Blue and Gold

Home Arena (capacity): Macdonough Hall (750)

Conference: Patriot League

Superintendent: Vice Adm. Jeffery Fowler, USN

Director of Athletics: Chet Gladchuk

Sports Information

Volleyball Contact: Justin Kischefskey

Office phone: 410-293-8772

E-mail: kischefs@usna.edu

Women's Volleyball

Head coach (alma mater, year): Mike Schwob

(George Mason, '88)

Career record (years): 168-169 (11)

Record at school (years): same

2006 overall record/conf. record (finish): 11-20/3-11 (T-6th)

Returning/lost (starters): 8 (4+libero)/4 (2)



NORTH TEXAS UNIVERSITY

Sept. 15, 2 pm, at Tulsa, OK
(Tulsa Invitational)

General Information

Location: Denton, TX

Founded: 1890

Enrollment: 32,181

Nickname/colors: Mean Green/ Green and White

Home Arena (capacity): North Texas Volleyball Center (600)

Conference: Sun Belt

President: Dr. Gretchen Bataille

Director of Athletics: Rick Villarreal

Sports Information

Volleyball: Stephen Howard

Office phone: 940-369-8548

E-mail: showard@unt.edu

Women's Volleyball

Head coach (alma mater, year): Cassie Headrick

(Arkansas-Little Rock '95)

Career record (years): 103-122 (7)

Record at school (years): same

2006 overall record/conf. record (finish): 23-12/13-5 (1st West)

Returning/lost (starters): 9 (3+libero)/4 (3)

**PROVIDENCE COLLEGE**

Oct. 26, 7 pm, Fleisher Athletic Center

(Highlander Invitational)

Nov. 16-Nov. 17 at Orem, UT

(Division I Independent Tournament)

General Information

Location: Providence, RI

Founded: 1917

Enrollment: 3,998

Nickname/colors: Friars/Black, White and Silver

Home Court (capacity): Mullaney Gymnasium in Alumni Hall (2,600)

Conference: Independent

President: Reverend Brian J. Shanley, O.P.

Director of Athletics: Robert G. Driscoll, Jr.

Sports Information

Volleyball Contact: Ryan Emerson

Office phone: 401-865-1245

E-mail: remerso@providence.edu

Women's Volleyball

Head coach (alma mater, year): Margot Royer (Scranton '95)

Career record (years): 32-109 (6)

Record at school (years): same

2006 overall record: 14-18

Returning/lost (starters): 11 (6)/0

**QUINNIPIAC UNIVERSITY**

Sept. 29, 12 pm, Fleisher Athletic Center
(NJIT Invitational)

General Information

Location: Hamden, CT

Founded: 1929

Enrollment: 7,400

Nickname/colors: Bobcats/ Navy and Gold

Home court (capacity): Burt Kahn Court

Conference: Northeast

President: Dr. John L. Lahey

Director of Athletics: Jack MacDonald

Sports Information

Volleyball Contact: Michael Kobylanski

Office phone: 203-582-8625

E-mail: Michael.kobylanski@quinnipiac.edu

Women's Volleyball

Head coach (alma mater, year): Sue Medley

(Notre Dame, 1986)

Career record (years): 52-101 (11)

Record at school (years): 1-30 (1)

2006 overall record/conf. record (finish): 1-30/1-8 (7th)

Returning/lost (starters): 9 (4)/3 (2)

**SACRED HEART UNIVERSITY**

Oct. 27, 4 pm, Fleisher Athletic Center

(Highlander Invitational)

General Information

Location: Fairfield, CT

Founded: 1963

Enrollment: 3,200 undergraduates

Nickname/colors: Pioneers/Red and White

Home Court: William H. Pitt Center

Conference: Northeast

President: Dr. Anthony J. Cernera

Director of Athletics: C. Donald Cook

Sports Information

Volleyball Contact: Gene Gumbs

Office phone: 203-396-8127

E-mail: gumbsg@sacredheart.edu

Women's Volleyball

Head coach (alma mater, year): Rob Machan (USC '01)

Career record (years): first season

Record at school (years): same

2006 overall record/conf. record (finish): 3-23/2-6 (7th)

Returning/lost (starters): 8 (4)/4 (2)

**ST. FRANCIS COLLEGE (NY)**

Sept. 28, 1 pm, Fleisher Athletic Center

(NJIT Invitational)

General Information

Location: Brooklyn Heights, NY

Founded: 1884

Enrollment: 2,300

Nickname/colors: Terriers/ Red and Blue

Home Court: Genovesi Center

Conference: Northeast

President: Dr. Frank Macchiarola

Director of Athletics: Irma Garcia

Sports Information

Volleyball Contact: TBA

Office phone: 718-489-5369

E-mail: TBA@stfranciscollege.edu

Women's Volleyball

Head coach (alma mater, year): Christy Herring

(Long Island University, 2001)

Career record (years): 0-23 (1)

Record at school (years): same

2006 overall record/conf. record (finish): 0-23/0-8 (9th)

Returning/lost (starters): 5 (4)/4 (2)

**SAINT FRANCIS UNIVERSITY (PA)**

Oct. 14, 2 pm, Fleisher Athletic Center

General Information

Location: Loretto, PA

Founded: 1847

Enrollment: 2,000

Nickname/colors: Red Flash/Red and White

Home Court (capacity): Maurice Stokes Athletics Center (3,500)

Conference: Northeast

President (Interim): Rev. Gabriel Zeis, T.O.R.

Director of Athletics: Bob Krimmel

Sports Information

Volleyball Contact: Ben Mitchell

Office phone: 814-472-3916

E-mail: bmitchell@francis.edu

Women's Volleyball

Head coach (alma mater, year): Scott Gleason

(Southampton '86)

Career record (years): 124-175 (9)

Record at school (years): 69-125 (6)

2006 overall record/conf. record (finish): 19-4/7-1 (1st)

Returning/lost (starters): 8 (4)/6 (3)

**ST. JOHN'S UNIVERSITY**

Aug. 31, 12:30 pm, at Jamaica, NY

(St. John's Tournament)

General Information

Location: Queens, NY

Founded: 1870

Enrollment: 19,600

Nickname/colors: Red Storm/Red and White

Home Court (capacity): Carnesecca Arena (6,008)

Conference: BIG EAST

President: Rev. Donald J. Harrington, C.M.

Director of Athletics: Chris Monasch

Sports Information

Volleyball Contact: Joe Guster

Office Phone: 781-990-1523

Email: stjcommunications@stjohns.com

Women's Volleyball

Head Coach: Joanne Persico-Smith (Syracuse '87)

Career record (years): 259-160 (13)

Record at school (years): same

2006 overall record/conf. record finish: 31-5/14-0 (1st)

Postseason: at-large NCAA Tournament (lost 2nd round)

Returning/lost (starters): 9 (5+libero)/3 (2)

**SAINT PETER'S COLLEGE**

Aug. 25, 2:30 pm, at New Britain, CT

(Central Connecticut State Tournament)

General Information

Location: Jersey City, NJ

Founded: 1872

Enrollment: 3,282

Nickname/colors: Peahens/Blue and White

Home Court (capacity): Yanitelli Center (500)

Conference: Metro Atlantic Athletic (MAAC)

President: Dr. Eugene J. Cornacchia

Director of Athletics: William Stein

Sports Information

Volleyball Contact: Pat Coleman

Office phone: 201-761-7316

E-mail: pcoleman@spc.edu

Women's Volleyball

Head coach (alma mater, year): Mike Massone

(St. Francis '78; NYU '89)

Career record (years): 31-37 (2)

Record at school (years): same

2006 overall record/conf. record (finish): 15-24/6-12 (7th)

Returning/lost (starters): 5 (3)/9 (3)

**SETON HALL UNIVERSITY**

Sept. 5, 7:30 pm, at South Orange, NJ

General Information

Location: South Orange, NJ

Founded: 1856

Enrollment: 9,700

Nickname/colors: Pirates/Blue and White

Home Court (capacity): Walsh Gymnasium (2,600)

Conference: BIG EAST Conference

President: Monsignor Robert Sheeran

Director of Athletics: Joseph A. Quinlan, Jr.

Sports Information

Volleyball Contact: Mike Kowalsky

Office Phone: 973-761-9493

Email: kowalsmi@shu.edu

Women's Volleyball

Head Coach (Alma Mater, year): Kris Zeiter

(Concordia College '98)

Career record (years): 16-14 (1)

Record at school (years): same

2006 overall record/conf. record (finish): 16-14/5-9 (9th)

Returning/lost (starters): 13 (4)/3 (2)



UNIVERSITY OF TEXAS-PAN AMERICAN

Nov. 16-Nov. 17 at Orem, UT
(Division I Independent Tournament)

General Information

Location: Edinburg, TX
Founded: 1927
Enrollment: 19,576

Nickname/colors: Lady Broncs/Forest Green, Orange and White

Home Court (capacity): UTPA Fieldhouse (4,000)

Conference: Independent

President: Dr. Blandina Cardenas
Director of Athletics: Scott Street

Sports Information

Volleyball Contact: Joe Monaco
Office phone: 956-381-2240
E-mail: jmonaco@utpa.edu

Women's Volleyball

Head coach (alma mater, year): Angela Hubbard
(University of West Georgia, '04)
Career record (years): First season
Record at school (years): same

2006 overall record: 6-25
Returning/lost (starters): 9 (4)/2 (2)



UNIVERSITY OF TULSA

Sept. 14, 1 pm, at Tulsa, OK
(Tulsa Invitational)

General Information

Location: Tulsa, OK
Founded: 1894
Enrollment: 4,100

Nickname/colors: Golden Hurricane/Old Gold, Royal Blue and Crimson

Home Court (capacity): Donald W. Reynolds Center (8,355)

Conference: Conference USA

President: Dr. Steadman Upham
Director of Athletics: Bubba Cunningham

Sports Information

Volleyball Contact: Jason West
Office phone: 918-631-2492
E-mail: Jason-west@utulsa.edu

Women's Volleyball

Head coach (alma mater, year): Ed Allen (Ball State '88)
Career record (years): 27-7 (1)
Record at school (years): same

2006 overall record/conf. record (finish): 27-7/13-3 (1st)
Returning/lost (starters): 5 (2+libero)/6 (4)



UMBC

Oct. 10, 7 pm, at Baltimore, MD

General Information

Location: Baltimore, MD
Founded: 1966
Enrollment: 12,000

Nickname/colors: Retrievers/Black and Gold with Red
Home Arena (capacity): RAC Arena (4,024)

Conference: America East

President: Dr. Freeman Hrabowski
Director of Athletics: Dr. Charles Brown

Sports Information

Volleyball Contact: Tim Conway
Office phone: 410-455-1530
E-mail: conway1@umbc.edu

Women's Volleyball

Head coach (alma mater, year): Ian Blanchard
(Westfield State College '88)
Career record (years): 27-33 (2)
Record at school (years): same

2006 overall record/conf. record (finish): 16-15/7-5 (3rd)
Returning/lost (starters): 11 (4)/8 (2+libero)



UTAH VALLEY

Sept. 28, 7 pm, Fleisher Athletic Center
(NJIT Invitational)
Nov. 16-Nov. 17 at Orem, UT
(Division I Independent Tournament)

General Information

Location: Orem, UT
Founded: 1941
Enrollment: 24,000

Nickname/colors: Wolverines/Forest Green, Gold and White

Home Court: The McKay Center
Conference: Independent

President: Dr. William A. Sederburg
Director of Athletics: Mike Jacobsen

Sports Information

Volleyball Contact: Clint Burgi
Office Phone: 801-863-8644

Women's Volleyball

Head Coach: Sam Atoa (Brigham Young University '88)
Career record at UVU (years): 194-83 (8)
NCAA Division I Record at school (years): 56-52 (4)

2006 overall record: 17-11
Returning/lost (starters): 6 (2+libero)/9 (4)



VIRGINIA TECH

Sept. 1, 9 am at Jamaica, NY
(St. John's Tournament)

General Information

Location: Blacksburg, VA
Founded: 1872
Enrollment: 28,000

Nickname/colors: Hokies/Chicago Maroon & Burnt Orange

Home Court (capacity): Cassell Coliseum (9,847)

Conference: Atlantic Coast Conference (ACC)

President: Dr. Charles W. Steger
Director of Athletics: Jim Weaver

Sports Information

Volleyball Contact: Amanda McClure
Office phone: 540-231-2228
E-mail: mccluras@vt.edu

Women's Volleyball

Head coach (alma mater, year): Chris Riley
Career record (years): 161-68 (7)
Record at school (years): 17-14 (1)

2006 overall record/conf. record (finish): 17-14/11-11 (6th)
Returning/lost (starters): 7 (4+libero)/7 (2)



WAGNER COLLEGE

Oct. 12, 5 pm, Fleisher Athletic Center
Nov. 2, 8 pm, at Staten Island, NY

General Information

Location: Staten Island, NY
Founded: 1883
Enrollment: 2,000

Nickname/colors: Seahawks/Green and White
Home Arena (capacity): Spiro Sports Center

Conference: Northeast Conference

President: Dr. Richards Guarasci
Director of Athletics: Walter Hameline

Sports Information

Volleyball Contact: Kevin Ross
Office phone: 718-390-3215
E-mail: kevin.ross@wagner.edu

Women's Volleyball

Head coach (alma mater, year): Kevin Michael Papa
(Penn State, '02)
Career record (years): 20-98 (4)
Record at school (years): same

2006 overall record/conf. record (finish): 9-23/4-4 (T-5th)
Returning/lost (starters): 8 (4)/5 (3)



Katrina Hornstein

NEWARK: THE RENAISSANCE CITY

NJIT is located in the heart of New Jersey's largest city. A major urban center, Newark is a city on the move. Some 30,000 undergraduate, graduate and professional students attend classes in University Heights at the city's four public institutions of higher learning: NJIT, Rutgers-Newark, the University of Medicine and Dentistry of New Jersey, and Essex County College.



Attractions in Newark's revitalized downtown include:

- . The Newark Museum
- . New Jersey Performing Arts Center
- . The Newark Public Library
- . Symphony Hall
- . Branch Brook Park
- . Art galleries, restaurants, and shopping
- . An urban architectural laboratory
- . Professional minor league baseball (Newark Bears)
- . New Jersey Devils Hockey and other events at the Prudential Center

Above Left: New Jersey Performing Arts Center, located minutes from campus, is quickly becoming one of the state's more popular entertainment venues.

Above Right: Aerial view of downtown Newark.

Right: The Newark Museum, a staple in the revitalization efforts in the downtown Newark area.



NEWARK: NEW JERSEY'S COLLEGE TOWN

Adjacent to NJIT is the Newark campus of Rutgers University.

NJIT and Rutgers enjoy an exceptionally close and productive consortial relationship within the thriving University Heights section of Newark. NJIT and Rutgers students have library privileges at both campuses. NJIT students may also enrich their educational experience by enrolling in Rutgers-Newark courses and in full degree programs in disciplines not offered at NJIT, such as art, music, geology and psychology.

Each year the two universities co-sponsor a common season of theatrical productions, as well as 'World Week,' a joint program of honors colloquia, and a variety of other cultural and social activities.

NEW JERSEY/NEW YORK METROPOLITAN REGION

The NJIT campus is in one of the nation's most exciting cultural and business regions. Advantages include:

- . Minutes from New Jersey Performing Arts Center, Liberty Science Center, Meadowlands Sports Complex, Manhattan and all of its attractions, Newport Center Mall, and Secaucus Outlet Center.
- . Discount tickets for Broadway shows, museums, concerts, and sporting events.
- . Weekend trips throughout the Northeastern United States: skiing, boating, swimming, hiking, and more.
- . The spectacular Jersey shore is less than one hour away.



PRUDENTIAL CENTER

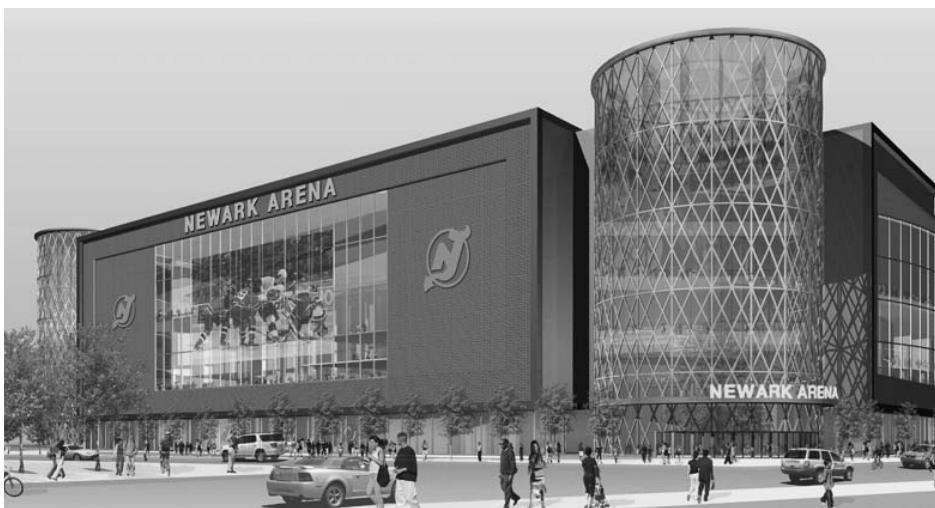
The new home of the National Hockey League New Jersey Devils is going up in downtown Newark at the corner of Mulberry and Edison streets, about one mile from the NJIT's University Heights campus.

Scheduled for completion in time for the Devils' 2007-08 season, the building is set to be the centerpiece of the city's Downtown Core Redevelopment Project. In addition to the world's best hockey, 'The Rock' will be home to numerous entertainment and sporting events, including NCAA Division I basketball, with at least one NJIT home game in the building's first year.

The arena, with seating for 17,500 spectators, will feature a 4,800 square-foot exterior LED screen, as well as the latest in ice-surface technology and a gourmet restaurant overlooking the ice for Devils games. The building will contain 850,000 square feet of space, 9,000 tons of steel, eight million pounds of structural steel and 25,000 cubic yards of concrete.

RED BULL PARK

The Red Bulls of Major League Soccer and AEG New York broke ground in September 2006 for Red Bull Park, a 25,000-seat soccer stadium and a major component of the Harrison MetroCentre development, located across the Passaic River, about two miles from NJIT's campus.



The \$100 million 'soccer specific' stadium will feature a 360-degree European-style roof/canopy covering the majority of the seating. When completed in the summer of 2008, Red Bull Park will be the home of the MLS Red Bulls, international soccer and other events. AEG developed and operates 'soccer specific' stadiums in California and in Illinois.

The multi-billion dollar Harrison MetroCentre will feature three million square feet of office space; 3,500 residential units; 300,000 square feet of retail space and over 10,000 decked parking spaces when completed.



BEARS AND EAGLES RIVERFRONT STADIUM

Bears and Eagles Riverfront Stadium, the \$30 million state-of-the-art home of the professional baseball Newark Bears and since 2004 the home of NJIT Highlanders baseball, officially opened to the public on July 16, 1999. With a seating capacity of 6,200, "The Den" affords fans an up-close view of the



action. The ballpark also has 20 luxury suites, a picnic area, a party deck, a concert stage situated behind the outfield wall and a major league-caliber press box.

In December 2005, NJIT and the Bears held a joint press conference to herald a new partnership that includes a 10-year deal that extends Bears and Eagles Riverfront Stadium as the home of NJIT Highlanders baseball.

ALL-TIME HONORS

POSTSEASON APPEARANCES

ECAC D-III Metro

1987, 1988

CONFERENCE CHAMPIONSHIPS

WIAC

1985, 1986, 1988

IAC

1986, 1988

CONFERENCE PLAYER OF THE YEAR

IAC

1988 – Sonia Zacher

GTE REGIONAL ACADEMIC ALL-AMERICA

1988 – Sonia Zacher

ALL-WIAC 1984

Eileen Begasse
Marilyn Dawson
Heidi Hartung

1985

Eileen Begasse
Marilyn Dawson
Liz Goldrick

1986

Marilyn Dawson
Claire Nicolaou

1987

Claire Nicolaou

1988

Denise Corsaro
Liz Goldrick
Gina Ochs (2nd)
Sonia Zacher

1989

Denise Corsaro
Kathy Eng (2nd)
Ursula Fukazawa (2nd)
Yanet Gonzalez

1990

Kathy Eng
Yanet Gonzalez
Gina Ochs
Joanie Pratt

1991

Kathy Eng
Connie Krzeminski (HM)

1992

Kathy Eng

1995

Wendy Gruenewald (HM)
Lenny Jiminez

ALL-IAC 1986

Denise Corsaro
Marilyn Dawson
Liz Goldrick (2nd)
Claire Nicolaou
Regina Rygelis (2nd)

1987

Liz Goldrick
Claire Nicolaou
Gina Ochs (2nd)
Sonia Zacher (2nd)

1988

Denise Corsaro
Liz Goldrick
Yanet Gonzales (2nd)
Gina Ochs
Sonia Zacher

1989

Denise Corsaro
Kathy Eng (2nd)
Ursula Fukazawa (2nd)
Yanet Gonzalez

1990

Kathy Eng
Ursula Fukazawa
Yanet Gonzalez

Gina Ochs
Joanie Pratt

1991

Kathy Eng
Connie Krzeminski
Kathy Liu (HM)

1992

Kathy Eng
Kathy Liu (2nd)
Tulia Rios (2nd)
Edyta Wrona

1993

Donna King (2nd)

1995

Wendy Gruenewald (2nd)
Lenny Jiminez (2nd)

ALL-JERSEY 9

1990

Kathy Eng

1991

Kathy Eng
Connie Krzeminski

1992

Kathy Eng

1993

Donna King
Clara Ponton

CACC NEWCOMER

2004

Angie Casado

ALL-CACC

2005

Agnieszka Pregowska

DIVISION I INDEPENDENT ALL-ACADEMIC

2006

Emese Gyuricza
Agnieszka Pregowska

PROGRAM HISTORY

| Year | Record | WIAC | IAC | Jersey 9 | NYCAC | CACC | Postseason | Head Coach | Captains | MVP |
|--------------|--------|------|-----|----------|-------|------|------------|-----------------|---|---------------------|
| 1982 | 1-11 | — | — | — | — | — | — | Oleg Moiseenko | Heidi Hartung, Becky Miranda | |
| 1983 | 6-15 | — | — | — | — | — | — | Dave DeNure | Heidi Hartung, Becky Miranda | Sharon Ingram |
| 1984 | 10-5 | 2nd | — | — | — | — | — | Dave DeNure | Heidi Hartung, Becky Miranda | Becky Miranda |
| 1985 | 14-6 | 1st | 2nd | — | — | — | — | Dave DeNure | Eileen Begasse, Marilyn Dawson | Marilyn Dawson |
| 1986 | 24-8 | 1st | 1st | — | — | — | — | Dave DeNure | Marilyn Dawson | Claire Nicolaou |
| 1987 | 22-8 | 2nd | 2nd | — | — | — | ECAC semis | Dave DeNure | | Claire Nicolaou |
| 1988 | 26-6 | 1st | 1st | — | — | — | ECAC semis | Dave DeNure | Liz Goldrick, Felicia Mays | Liz Goldrick |
| 1989 | 15-17 | 2nd | 2nd | — | — | — | — | Dave DeNure | Denise Corsaro | Denise Corsaro |
| 1990 | 23-12 | 2nd | 2nd | 1st | — | — | — | Dave DeNure | Kathy Eng | Kathy Eng |
| 1991 | 10-16 | — | — | — | — | — | — | Dave DeNure | | Kathy Eng |
| 1992 | 11-13 | 2nd | 2nd | 4th | — | — | — | Kerry Keith | Kathy Eng | Kathy Eng |
| 1993 | 7-20 | 3rd | — | — | — | — | — | Bob Fordi | Diana Nieto, Bonnie Tai | Donna King |
| 1994 | 9-14 | 3rd | 2nd | — | — | — | — | Bob Fordi | Lenny Jiminez, Bonnie Tai | Lenny Jiminez |
| 1995 | 8-19 | — | — | — | — | — | — | Bob Fordi | Sandra Caceras | Lenny Jiminez |
| 1996 no team | | | | | | | | | | |
| 1997 no team | | | | | | | | | | |
| 1998 | 0-10 | — | — | — | 12th | — | — | Jon Bednasz | | Melsha Winchester |
| 1999 | 1-17 | — | — | — | 12th | — | — | Jon Bednasz | | Melsha Winchester |
| 2000 | 0-16 | — | — | — | — | 8th | — | Manny Del Rio | Nikeisha Joseph | Carisa Butensky |
| 2001 | 0-20 | — | — | — | — | 8th | — | Anthony Valbrun | Nikeisha Joseph | Marta Oporska |
| 2002 | 0-18 | — | — | — | — | 9th | — | Anthony Valbrun | Eliana Lara, Stacy Waldburger | Chevanese Samms |
| 2003 | 0-21 | — | — | — | — | 10th | — | Pavlina Klimova | Dolores Martinez | Dolores Martinez |
| 2004 | 13-13 | — | — | — | — | 5th | — | Pavlina Klimova | Dolores Martinez | Angie Casado |
| 2005 | 9-20 | — | — | — | — | 8th | — | Ryan McNeil | Danielle Thompson | Agnieszka Pregowska |
| 2006 | 10-21 | — | — | — | — | — | — | Ryan McNeil | Danielle Thompson, Agnieszka Pregowska | Kristy Haeckel |

Note: All blank information is missing. Anyone with documentable proof of missing information, or corrections to the above, is asked to contact the sports information office at (973) 596-8324 or pillari@njit.edu.

— A —

APPLEBY, Emma 00, 01, 03
 ALMAGRO, Sandy 99
 ALVARDO, Karla 91, 92, 93, 94
 ALVAREZ, Mildred 92

— B —

BABY, Sabrina 06
 BAEZ, Aliza 91
 BEGASSE, Eileen 83, 84, 85, 88
 BERNAL, Marelis 03
 BERROA, Beverly 99, 00, 02
 BROWN, Jessica 87
 BUTENSKY, Carisa 00, 01
 BORILLA, Anna 98
 BOYADJIS, Theodora 04

— C —

CACERAS, Sandra 92, 93, 95
 CAMEROTA, Laura 93
 CASADO, Angie 04
 CHIRINOS, Gladys 98
 CHOI, R. 82
 CHOY, Yvonne 94, 95
 CONTALDI, Natalie 85, 86
 CORSARO, Denise 85, 86, 88, 89
 CRAIG, Ashley 04, 05
 CRUZ, Iris 91

— D —

DAWSON, Marilyn 83, 84, 85, 86
 DECANDIA, Nicole 01
 DELGADO, Paola 93

— E —

ENG, Cathy 89, 90, 91, 92

— F —

FERNANDEZ, Alana 99, 00
 FORTIER, Linda 85, 86, 87, 88
 FRANKLIN, Sylvia 88, 90
 FUKAZAWA, Ursula 87, 88, 89, 90

— G —

GOLDRICK, Elizabeth 85, 86, 87, 88
 GOMEZ, Monica 98
 GONZALEZ, Claudia 83, 84
 GONZALEZ, Yanet 87, 88, 89, 90
 GRADDY, E. 82, 83
 GRUENEWALD, Wendy 95
 GYURICZA, Emese 06

— H —

HAECKEL, Kristy 06
 HAMILTON, Heather 98
 HAROLD, Lynn 85
 HARTING, Hiedi 82, 83, 84
 HICKS, R. 83
 HOOGERHYDE, Allison 05
 HORNSTEIN, Kasha 06

— I —

INGRAM, S. 82, 83

— J —

JOSEPH, Nikiesha 98, 99, 00, 01



Kubra Tanrikulu

— K —

KASEM, Fatima 06
 KING, Donna 91, 92, 93
 KING, S. 82
 KREHER, Elizabeth 04, 05
 KULKARNI, Sita 03, 04

— L —

LAGAN, Tara 90
 LARA, Eliana 00, 01, 02
 LEE, Diana 82, 83, 84
 LIU, Kathy 88, 90, 91, 92
 LOAYZA, Marcie 98, 99, 00
 LOPEZ, Cindy 93, 94, 95
 LORENZETTI, Lisa 92

— M —

MAHECHA, Luz 03
 MARIN, Olga 87
 MARTINEZ, Dolores 01, 02, 03, 04
 MASSEY, SchrKya 03
 MAYS, Felicia 86, 87, 88, 90
 MCKENNA, A 82
 MCNAIR, Tamara 95
 MENDOZA, Charisma 99
 MENESES, Michelle 92
 METTLE, Jane 05
 MIRANDA, Becky 82, 83, 84
 MONTFERRET, Jennifer 01
 MUCHA, M 82
 MULLEN, Veronica 99

— N —

NAGY, K 82
 NICOLAOU, Claire 85, 86, 87
 NIETO, Diana 91, 92, 93, 95

— O —

OCHS, Gina 86, 87, 88, 90
 O'CONNOR, Kelly 89, 90, 91
 OPORSKA, Marta 01, 03, 04, 05

— P —

PACHECO, Patricia 87, 88, 90
 PAGANO, Maria 85, 86
 PAG, Song Sun 84, 85
 PAPALEXIOU, Renuska 05
 PATEL, Sushreeta 95
 PICHARDO, Carmen 94, 95
 PINCAY, Maria 95
 POLANSKY, Odarka 83, 84, 85
 PREGOWSKA, Agnieszka 05, 06
 PROPSNER, J 82, 83

— Q —

QUINTANILLA, Jackie 05
 QUINTERO, Veronica 03, 04

— R —

RACHER, Sonia 86
 RATYCH, Nadia 84
 RIOS, Tulia 88, 89, 90, 92
 RIVERA, Erica 98
 RIVERA, H. 82
 ROBINSON, Sharae 03
 ROJAS, S. 83
 RONQUILLO, R. 82, 83
 RUSIN, Kasia 04, 05
 RYGELIS, Regina 82, 85, 86

— S —

SANTOS, Catherine 02
 SAMMS, Chevanese 02
 SAMPER, Jessica 04
 SANTANA, Dennise 03
 SCHNEIDER, Cindy 84, 85
 SNEED, Brandy 01

— T —

TAI, Bonnie 92, 93, 94
 TALOCCO, Michelle 93, 94, 95
 TANRIKULU, Kubra 04, 06
 THOMPSON, Danielle 05, 06
 TOMCZAK, Anna 99
 TRUCILLO, Gina 86, 87, 88, 89

— V —

VARGAS, Sharon 01, 02

— W —

WALDBURGER, Stacy 00, 01, 02
 WASHINGTON, Lisa 86
 WILKINSON, Rebecca 04, 06
 WINCHESTER, Melsha 98, 99
 WONG, Lleana 83, 84
 WRONA, Edyta 89, 90, 91, 92
 WYKA, Jaculine 00, 01

— Z —

ZACHER, Sonia 85, 87, 88

BY CAR

New Jersey Turnpike: Driving North from South Jersey: NJ Turnpike to Exit 13A Newark Airport. After toll booth stay to left follow signs to Rt. 1 & 9 North. You will merge onto Rt. 1 & 9 North. Airport will be on right. Follow signs for downtown Newark and Rt. 21 North-(left lane exit ramp). Downtown Newark will be in front of you. Follow Rt. 21 North (McCarter Highway). Turn left on Raymond Blvd. Follow Raymond Blvd. past Warren St. traffic light (Raymond Blvd. becomes Lock St.) Fleisher Athletic Center & Lubetkin Field will be on your right.

New Jersey Turnpike: Driving South from North Jersey: Take exit 15W to Route 280 West. Then follow Route 280 West directions.

Route 280 West: After drawbridge, take Exit 15A (Rt. 21 South - McCarter Highway). Follow Rt. 21 South to Raymond Blvd. Turn right on Raymond Blvd. Follow Raymond Blvd. past Warren St. traffic light (Raymond Blvd. becomes Lock St.) Fleisher Athletic Center & Lubetkin Field will be on your right.

Route 280 East: Take Exit 15 (Rt. 21 South - McCarter Highway). Follow Rt. 21 South to Raymond Blvd. Turn right on Raymond Blvd. Follow Raymond Blvd. past Warren St. traffic light (Raymond Blvd. becomes Lock St.) Fleisher Athletic Center & Lubetkin Field will be on your right.

Garden State Parkway (North & South bound): Take exit 145 to Route 280 East, then follow Route 280 East directions.

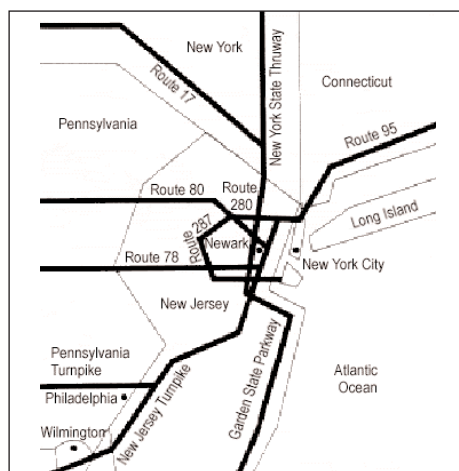
Route 1 & 9 North & South: Take exit marked Newark, Rt. 21 North. Follow Rt. 21 North (McCarter Highway). Turn left on Raymond Blvd. Follow Raymond Blvd. past Warren St. traffic light (Raymond Blvd. becomes Lock St.) Fleisher Athletic Center & Lubetkin Field will be on your right.

Route 78 East: Take Route 78 East to Rt. 21 North. Turn left on Raymond Blvd. Follow Raymond Blvd. past Warren St. traffic light (Raymond Blvd. becomes Lock St.) Fleisher Athletic Center & Lubetkin Field will be on your right.

Route 22 East: Take Route 22 East to Route 21 North. Turn left on Raymond Blvd. Follow Raymond Blvd. past Warren Street Stop Light and Fleisher Athletic Center & Lubetkin Field will be on your right.

Route 21 North: Follow Rt. 21 North to Raymond Blvd. Turn left onto Raymond

Blvd. Follow Raymond Blvd. past Warren St. traffic light (Raymond Blvd. becomes Lock St.) Fleisher Athletic Center & Lubetkin Field will be on your right.



Route 21 South: Follow Rt. 21 South (McCarter Highway) to Raymond Blvd. Turn Right on Raymond Blvd. Follow Raymond Blvd. past Warren St. traffic light (Raymond Blvd. becomes Lock St.) Fleisher Athletic Center & Lubetkin Field will be on your right.

New York Thruway: Thruway to Exit 14A, Garden State Parkway. Follow Garden State Parkway directions above.

George Washington Bridge: NJ Turnpike South to Exit 15W. Follow Route 280 West directions above.

Lincoln Tunnel: West on Rt. 3 to Rt. 21 South. Turn right onto Raymond Blvd. Follow Raymond Blvd. pass Warren Street Stop Light and Fleisher Athletic Center & Lubetkin Field will be on your right.

From Brooklyn, Queens and Long Island: Take Verrazano-Narrows Bridge (Interstate 278) and follow 278 across Staten Island. Cross Goethels Bridge. Follow signs to New Jersey Turnpike North and follow New Jersey Turnpike directions above.

OTHER TRANSPORTATION SYSTEMS

Newark International Airport: Five miles from the NJIT campus. A minibuss (Newark Airlink) or taxi service connects the airport with Penn Station in Newark. Bus, city subway, and taxi connections may be obtained at the station.

Newark Penn Station: Connections to the NJIT campus may be made by bus, city subway, or taxi.

Morris & Essex Broad Street Station: A

five-block walk to the NJIT campus via King Boulevard to Central Avenue. Taxi service is also available

Newark City Subway: From Penn Station in Newark, take the Warren Street stop for the NJIT campus.

DOWNTOWN HOTELS

Comfort Suites

1348 McCarter Highway, Newark
973/481-5200

Hampton Inn & Suites Newark Riverwalk

100 Passaic Avenue, 973/483-1900

Hilton Newark Gateway

Gateway Center, Raymond Blvd. & McCarter Highway, 973/622-5000

Robert Treat Hotel

50 Park Place, Newark, 973/622-1000

HOTELS NEAR NEWARK AIRPORT

Best Western Newark Airport West

101 International Way, Newark
973/621-6200

Courtyard by Marriot Newark Liberty International Airport

600 Route 1 & 9, Newark, 973/643-8500

Days Inn Newark

450 Rt.1 South (near Haynes Ave.), Newark, 973/242-0900

Fairfield Inn & Suites Newark Liberty International Airport

618 Rt.1 & 9 South, Newark, 973/242-2600

Four Points by Sheraton Newark Airport

901 Spring St., Elizabeth, 908/527-1600

Hampton Inn Newark Airport

1128-38 Spring St., Elizabeth 908/355-0500

Hilton Newark Airport

1170 Spring St., Elizabeth, 908/351-3900

Holiday Inn Newark Liberty International Airport

160 Frontage Rd., Newark, 973/589-1000

Marriott Newark Liberty International Airport

Newark, 973/623-0006

Ramada Inn Newark Liberty International Airport

550 Rt.1 & 9 South, Newark, 973/824-4000

Sheraton Newark Airport Hotel

128 Frontage Rd., Newark, 973/690-5500

Wyndham Newark Airport

1000 Spring St., Elizabeth, 908/436-4600



Shannon Abraham
Operations Manager
(973) 596-6406
Abraham@njit.edu



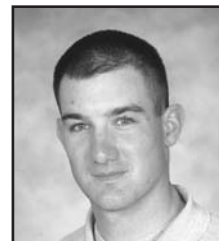
Adalberto M. Alonso
Head M/W Track & Field
Head M/W Cross County
(973) 596-3636
alonso@njit.edu



Phil Baboulis
Head Women's Tennis
Head Men's Tennis
(973) 596-3636
pbtennis@optonline.net



Joe Caiola
Asst. Director of Athletics/
Business & Facilities
(973) 642-7224
caiola@adm.njit.edu



Brian Callahan
Head Baseball
(973) 596-5827
callahan@njit.edu



Tim Camp
Asst. Director of Athletics
Sports Information
(973) 596-8461
timothy.camp@njit.edu



Jim Casciano
Head Men's Basketball
(973) 596-5727
casciano@adm.njit.edu



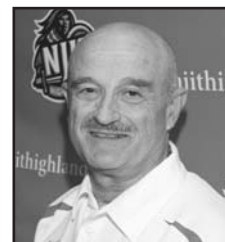
Dr. Roy Cornely
Faculty Athletics Rep.
(973) 596-3537
cornely@adm.njit.edu



Duane Felczak
Asst. Director of Phys. Ed.
(973) 596-3637
felczak@adm.njit.edu



Lenny Kaplan
Director of Athletics
(973) 596-3636
kaplan@adm.njit.edu



Yefim Litvan
Head Men's Fencing
Head Women's Fencing
(973) 596-8490
litvan@njit.edu



Pedro Lopes
Head Men's Soccer
(973) 596-5219
pedro.j.lopes@njit.edu



Margaret McKeon
Head Women's Basketball
(973) 596-3633
margaret.m.mckeon@njit.edu



Ryan McNeil
Head Men's Volleyball
Head Women's Volleyball
(973) 596-5380
mcneil@adm.njit.edu



Risa Ott
Assistant Athletic Director
of Compliance
(973) 596-3181
ott@admin.njit.edu



Michelle Paulter
Receptionist
(973) 596-3636
mlp2@njit.edu



Stephanie Pillari
Asst. Sports Information Director
(973) 596-8324
pillari@adm.njit.edu



Alyssa Radu
Head Women's Soccer
(973) 596-2928
radu@adm.njit.edu



Eric Rasmussen
Head Men & Women's Swimming
(973) 596-5229
rasmussen@njit.edu



Alexis Schug
Associate Athletic Director/
Senior Woman Administrator
(973) 596-8452
schug@njit.edu



Jonathan Walker
Front Desk Attendant
Equipment Specialist
(973) 596-5730



Tim Wuorinen
Coordinator for Compliance
and Student Athlete Services
(973) 596-5278
wuorinen@adm.njit.edu

| Name | Grad. Year | Contribution | Sport(s) | Years | Year of Induction |
|-----------------------------|------------|---------------------|-----------------------|---------------|-------------------|
| BAUDER, Fred "Coach" | -- | Coach | M-Basketball | 1932-61 | 1989 |
| BAKUN, Andrew I. | 1982 | Athlete/Asst. Coach | M-Soccer | 1978-81/90-91 | 2005 |
| BAKUN, Myron | 1967 | Athlete | M-Soccer | 1964-66 | 1991 |
| BLUM, Raymond E. | 1950 | Distinguished Alum. | Speedskating/Cycling | -- | 1996 |
| BORJA, Hernan "Chico" | 1981 | Athlete | M-Soccer | 1977-80 | 1986 |
| BORNAKO, Gregory "Egor" | 1970 | Athlete | M-Fencing | 1966-70 | 1987 |
| BOWSER, Hamilton V. | 1952 | Athlete | M-Fencing | 1948-52 | 1989 |
| BRADLEY, Thomas | 1978 | Athlete | M-Swimming | 1974-78 | 1990 |
| BROWN, Andrew D. | 1982 | Athlete | M-Soccer | 1956-78 | 2006 |
| CRIMMINS, David | 1952 | Athlete | M-Fencing | -- | 2007 |
| CRUZ, Edward | 1963 | Athlete | M-Soccer | 1959-62 | 1995 |
| DAWSON, Marilyn E. | 1986 | Athlete | WVB/WBKB/SB | 1982-86 | 1991 |
| DeNICOLA, Carmine P. | 1978 | Athlete | Baseball | 1975-78 | 2005 |
| DeVITO, Louis | 1960 | Athlete | M-Soccer/M-Fencing | 1956-60 | 1992 |
| DIAS, Joe A. | 1977 | Athlete | M-Soccer | 1973-76 | 1993 |
| DRURY, Eugene M. | 1963 | Athlete | M-Tennis | 1960-63 | 1988 |
| ENG, Katherine | 1993 | Athlete | W-Volleyball | 1989-92 | 2007 |
| ETIENNE, Yves | 1979 | Athlete | M-Volleyball | 1976-78 | 1990 |
| FEHN, Gilbert F. | 1940 | Athlete | M-Basketball/M-Tennis | 1936-40 | 1992 |
| FITZGERALD, Joseph M. | -- | Coach /Asst. Coach | M-Basketball | 1961-66/52-61 | 1986 |
| FLEISHER, Seymour "Zoom" | 1951 | Athlete | M-Basketball | 1947-51 | 1992 |
| GAGLIARDO, Salvatore A. | 1985 | Athlete | M-Basketball | 1981-85 | 1995 |
| GALLAGHER, Thomas G. | 1985 | Athlete | M-Basketball | 1981-85 | 1991 |
| GIOVANNOLI, Arnold L. | 1953 | Athlete | M-Basketball | 1950-53 | 1993 |
| GOLDRICK PITT, Elizabeth M. | 1990 | Athlete | WVB/SB/WBKB/WTen | 1985-90 | 1995 |
| GRUENEWALD, Wendy A. | 1997 | Athlete | WBKB/SB/WVB/WSoc | 1992-96 | 2003 |
| HAASE, Jay W. | 1975 | Athlete | M-Fencing | 1971-75 | 1988 |
| HAMMOND, Kenneth W. | 1979 | Athlete | M-Soccer | 1974-77 | 2003 |
| HANDWERKER, Andy | 1963 | Athlete | M-Soccer | 1959-62 | 2002 |
| HAUSSER, Paul C. | -- | Administrator | -- | 1953-91 | 1990 |
| HUBEY, Ali | 1972 | Coach | Fencing /Baseball | 1954-88/53-72 | |
| HURTADO, Fabian | 1975 | Athlete | M-Soccer | 1968-71 | 1990 |
| IRIS, Herb | 1951 | Athlete | M-Soccer | 1970-73 | 1987 |
| KAMINSKY, Nicholas J. | 1951 | Benefactor | -- | -- | 2007 |
| KASBARIAN, Raymond P. | 1978 | Athlete | Baseball | 1975-78 | 2006 |
| KETZNER, Robert Shelby | 1966 | Founder/Athlete | Judo | 1962-66 | 1989 |
| KHOWAYLO, Alex | -- | Coach | Rifle | 1962-86 | 1987 |
| LUBETKIN, Charles "Tudy" | 1969 | Athlete | M-Soccer | 1960-63 | 1996 |
| LYNCH, Robert K. | 1953 | Athlete | M-Basketball/M-Track | 1949-52 | 1994 |
| MacDONALD, Dan | 1984 | Athlete/Coach | M-Fencing | 1977-80/86-91 | 1993 |
| OLSEN, Richard J. | 1984 | Athlete | Baseball | 1981-84 | 1991 |
| OLSON, George R. | 1969 | Athlete | M-Basketball | 1965-69 | 1988 |
| PAULIUS, Raymond V. | 1977 | Athlete | Baseball | 1974-77 | 1987 |
| ROGERS, Warren E. | 1985 | Athlete | M-Soccer | 1980-83 | 2006 |
| ROMULUS, Rudy | 1988 | Athlete | M-Basketball | 1983-87 | 1993 |
| SARLO, Paul A. | 1991 | Athlete | M-Volleyball | 1988-91 | 1996 |
| SCHMID, John "Gene" | 1992 | Athlete | Baseball | 1989-91 | 2005 |
| SCHMID, John "Gene" | -- | Coach/Asst. Coach | Baseball | 1973-97/68-72 | 2002 |
| SIMON, J. Malcolm | -- | Coach | M-Soccer | 1955-83 | 1994 |
| SKURLA, Peter J. | -- | Athletics Director | -- | 1983-94 | |
| SWANSON, Robert F. | 1941 | Athlete | Bowling | 1937-41 | 1992 |
| TAETZSCH, Robert | -- | Athletics Director | -- | 1947-82 | 1986 |
| TAETZSCH, William | 1952 | Athlete | M-Fencing | -- | 2007 |
| TOSATO, Lawrence P. | 1952 | Athlete | M-Fencing | -- | 2007 |
| TUBELLO, Jeffrey | 1956 | Athlete | M-Basketball/Baseball | 1952-56 | 1987 |
| VAN WRIGHT, Nevea | 1976 | Athlete | Rifle | 1972-76 | 1988 |
| WALSH, John J. | 1997 | Athlete | W-Basketball | 1991-96 | 2005 |
| WASNIEWSKI, Frank | 1966 | Athlete | MSoc/MBKB/Baseball | 1962-66 | 1986 |
| WELGOS, Bob | 1980 | Athlete | M-Tennis | 1977-80 | 1990 |
| WOROBEC, Myron S. | 1962 | Athlete | M-Basketball/Bowling | 1959-62 | 2005 |
| YONEZUKA, Yoshisada | 1966 | Athlete | M-Soccer | 1962-65 | 1994 |
| ZORN, Werner | -- | Founder/Coach | Judo | 1962-?? | 1991 |
| | 1962 | Athlete | M-Soccer | 1958-61 | 1988 |

1960 Men's Soccer Team

1981-82 Men's Basketball Team

1982 Baseball Team

NAIA co-national champion 1988

NJIT's first ECAC and IAC champion 1990

NJIT's second ECAC and IAC champion 1993



THE NJIT 2007 WOMEN'S VOLLEYBALL TEAM

Top Row (L-R): Assistant Coach Jose Reynaldo Martins, Baaba Hughes, Erica Schultz, Ashley Craig, Sabrina Baby, Kubra Tanrikulu, Victoria Gill, Katlyn Lewis, Katrina Hornstein, Head Coach Ryan McNeil

Bottom Row (L-R): Danielle Thompson, Rebecca Wilkinson, Kristy Haeckel, Kasia Rusin, Agnieszka Pregowska



Women's Volleyball Schedule 2007

| Date | Day | Opponent | Time |
|--|-------|-------------------------------|---------|
| AUGUST | | | |
| Central Connecticut State Tournament (at CCSU – 8/25) | | | |
| 25 | Sat. | at Central Connecticut State | 12:30pm |
| | | vs. St. Peter's | 2:30pm |
| 28 | Tues. | at Army | 7:00pm |
| St. John's Tournament (at St. John's – 8/31-9/1) | | | |
| 31 | Fri. | at St. John's | 12:30pm |
| 1 | Sat. | vs. Virginia Tech | 9:00am |
| | | vs. Fairfield | 5:00pm |
| SEPTEMBER | | | |
| 5 | Wed. | at Seton Hall | 7:30pm |
| Trident Classic Volleyball Tournament (at Navy – 9/7-9/8) | | | |
| 7 | Fri. | at Navy | 7:00pm |
| 8 | Sat. | vs. Central Connecticut State | 11:00am |
| | | vs. Marist | 4:00pm |
| 11 | Tue. | LAFAYETTE | 7:00pm |
| Tulsa Invitational (at Tulsa – 9/14-9/15) | | | |
| 14 | Fri. | at Tulsa | 1:00pm |
| 15 | Sat. | vs. Grambling State | 9:00am |
| | | vs. North Texas | 2:00pm |
| 18 | Tue. | MORGAN STATE | 7:00pm |
| Harvard Tournament (at Harvard 9/21-9/22) | | | |
| 21 | Fri. | vs. Hartford | 4:00pm |
| 22 | Sat. | vs. Dartmouth | 10:00am |

| Date | Day | Opponent | Time |
|--|------|---------------------------|---------|
| 22 | Sat. | at Harvard | 7:00pm |
| 26 | Wed. | FAIRLEIGH DICKINSON | 7:00pm |
| NJIT Invitational (at NJIT 9/28-9/29) | | | |
| 28 | Fri. | NJIT vs. St. Francis (NY) | 1:00pm |
| | | NJIT vs. Utah Valley | 7:00pm |
| 29 | Sat. | NJIT vs. Quinnipiac | 12:00pm |
| | | NJIT vs. Columbia | 6:00pm |
| OCTOBER | | | |
| 10 | Wed. | at UMBC | 7:00pm |
| 12 | Fri. | WAGNER | 5:00pm |
| 14 | Sun. | ST. FRANCIS (PA) | 2:00pm |
| 17 | Wed. | at Morgan State | 7:00pm |
| Highlander Invitational (at NJIT 10/26-10/27) | | | |
| 26 | Fri. | NJIT vs. Providence | 7:00pm |
| 27 | Sat. | NJIT vs. Howard | 10:00am |
| | | NJIT vs. Sacred Heart | 4:00pm |
| 31 | Wed. | at American | 7:00pm |
| NOVEMBER..... | | | |
| 2 | Wed. | at Wagner | 8:00pm |
| 7 | Wed. | at Fairleigh Dickinson | 7:00pm |
| 10 | Sat. | DELAWARE STATE | 7:00pm |
| Independent Tournament (at Utah Valley) | | | |
| 16 | Fri. | TBA | TBA |
| 17 | Sat. | TBA | TBA |

Head Coach: Ryan McNeil (Lewis '01) **Assistant Coach:** Jose Reynaldo (JR) Martins

Home matches in **BOLD BLACK CAPS** at Estelle and Zoom Fleisher Athletic Center. | Schedule is subject to change - visit www.njithighlanders.com for updated times